




Ofsted
Outstanding
Provider



Somersham Primary School

Inspiring children to
achieve more than
they think is possible

Proud to be part of



**Meridian
Trust**

Welcome from the Head Teacher



Thank you for your interest in Somersham Primary School. I am thrilled that you are exploring the possibility of joining our school community.

Somersham Primary School serves the villages of Somersham and Pidley in Cambridgeshire. It is a member of Meridian Trust, a family of like-minded schools that share training, CPD and staff expertise to develop the best possible outcomes for children, whilst providing experiences for them to grow into responsible and engaged citizens.

We aim for Somersham to be a school that the village can be proud of, and where children come to learn, grow and develop, regardless of their age, gender, ethnicity, socio-economic background or attainment level.

Our school motto is **Inspiring children to achieve more than they think is possible**. We are proud to give children opportunities and learning experiences to inspire them to achieve whatever they put their mind to and enable them to become talented writers, mathematicians, sports-people, artists, musicians, scientists and citizens of our local, national and global communities.

We encourage all children to talk about their achievements at all levels. Whether this is an achievement in a lesson on a particular day, or something that has been mastered over a longer period of time, we aim for children to articulate their successes. There is nothing better than hearing the children speak proudly of their successes, academically, creatively and socially.

In October 2023, we received an 'Outstanding' rating from Ofsted. I am very proud of this school and it is a tremendous privilege to be its Head Teacher.

— Jonathan Clarke



We are proud to be part of Meridian Trust; a successful multi-academy trust founded on its commitment to people and communities. Across Meridian Trust, our staff benefit from strong networks, excellent career opportunities and a human approach where they are equally valued and supported. Every child is known, equally valued and supported to achieve their potential in all our academies and every community we serve benefits from the facilities and services we provide.



Valuing people



The pursuit of excellence



Achievement for all



High-quality learning environment



Extending the boundaries of learning

"This is a school that inspires pupils to achieve more than they think is possible."

Ofsted | 2023

Our Values

To ensure that children are in a position to **achieve more than they think is possible**, we have the following values underpinning all that we do:



Kindness

Fostering empathy and compassion to lay the foundations for kind citizens of the future



Honesty

Demonstrating integrity and openness for children to become respected individuals



Determination

Having high expectations to create a motivated and aspiring mindset



Pride

Feeling valued, happy and respected in childhood and beyond

Curriculum Overview

We are proud of the engaging and exciting curriculum we offer at Somersham Primary School.

We are committed to ensuring that all subjects of the National Curriculum are taught in detail and with interest so that children retain information during the year and beyond. Our Curriculum aims to:

- ★ Ensure that all children have the opportunity to learn the skills and knowledge that create active, interested and lifelong learners.
- ★ Provide a variety of exciting, flexible, enjoyable and engaging learning experiences for all children whilst fully implementing the National Curriculum.
- ★ Enable depth of coverage and effective sequencing in order to build progression of skills.
- ★ Ensure that all children make at least good progress.
- ★ Actively seek and plan for creative links between subjects to further understanding.
- ★ Plan for opportunities to write for real and experienced purposes across the curriculum.

EYFS Curriculum principles

Children entering Reception will follow the final phase of the **Early Years Foundation Stage (EYFS) Development Matters**, a structure of learning, development and care for children from birth to 5 years old.

The key elements of the Early Years Foundation Stage include:

- ★ Communication and Language
- ★ Physical Development
- ★ Personal, Social and Emotional Development
- ★ Reading and Writing
- ★ Mathematics
- ★ Understanding the World
- ★ Expressive Arts and Design



"Children get off to an exceptionally strong start in Reception. They are happy and settle quickly into the well-established routines and the calm environment."

Ofsted | 2023

Key Stage 1 & 2 Curriculum



Reading

We want children to be confident, enthusiastic readers who are able to engage with a wide range of texts. We aim to enable children to make the transition from learning to read to reading to learn.



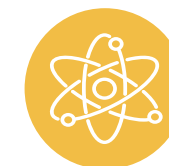
Writing

We want to see children express themselves effectively through writing. Children should grow as proficient communicators, who are able to adapt their writing for a wide range of purposes and audiences.



Maths

Our children see Maths as an enjoyable and exciting subject and we aim for them to leave the school as competent, independent and enthusiastic mathematicians.



Science

Our science curriculum facilitates opportunities to inspire children's curiosity with practical tasks set up to develop children's disciplinary and/or substantive knowledge



Geography

As geographers, our children explore local geography and the physical and human features of the area in which we live.



History

We embed the themes of Cultural Development, Science, Religion, Co-operation and Conflict, and Individuals in History in each unit of learning



Art

Our Art curriculum is designed to engage, inspire and challenge our children. We teach the appropriate knowledge and skills to experiment, invent and create.



French

We focus on teaching phonics, vocabulary and grammar, and aim to develop children who are confident to communicate in another language by the end of Key Stage 2.



Worldviews

Worldviews allows children to learn about religion and culture by considering the different ways in which people perceive the world, while also helping them to develop their own personal worldview.



Design Technology

The aim of our DT curriculum is to bring design technology alive for our children, to evoke the children's curiosity and engage their minds to create, build and use technology to build new and inventive products.



Music

An important part of life at Somersham – as part of themed learning, children have the opportunity to listen, compose and perform music, in an engaging, exciting and innovative way.



Computing

Through our Computing curriculum, we aim to give our children the necessary life skills to enable them to use new technology in a socially responsible and safe way to operate in the 21st century workplace.



Physical Education

We are passionate about PE and the impact of this commitment means that our children are focused learners who benefit from regular activity throughout the day and week



PSHE

Personal, Social & Health Education is taught weekly by the class teacher – the person with the greatest knowledge of the children, ensuring relationships are built and nurtured.



Pastoral Care & Wellbeing

SEND

At Somersham Primary School, we are committed to providing the best support we can for all learners.

Mrs Talbot, our SENDCo, can be contacted through her email address: stalbot@somershamprimary.co.uk

For more information and to read our SEND policies, please visit the SEND page on our website.

Safeguarding

Safeguarding all the children and adults at Somersham Primary School is our highest priority. This covers a variety of areas of school life, including:

- ★ Child Protection and Prevent
- ★ Safer recruitment and induction of staff / volunteers
- ★ Complaints and allegations
- ★ Policies and website compliance
- ★ Health and safety
- ★ E-safety
- ★ Personal development, health and welfare
- ★ Inclusion and SEND



Behaviour

There is mutual respect between all adults and children within our school. We demonstrate and expect exceptional standards of manners and courtesy.

Wrap-around Care

The popular before and after-school children's club, **Kids Time Extended School Club**, is located within the Parkhall Playgroup building, which adjoins the school site. Before you start at Somersham, you will receive details of opening times, facilities on offer and charges.

We also have a range of termly extra-curricular clubs available to our pupils. Visit our website for the latest timetable.



School Life at Somersham

Whole School Community

At Somersham, children are organised into single age or mixed age classes. These may vary year to year depending on numbers.

We also have a House System. The children will be placed into red, blue, green or yellow House. Each House also has a notable historic figure to represent them. If children have older siblings at the school, they will join them in their House. We regularly participate in whole school House events such as Sports Day, which is a great way of ensuring that our whole school community mixes together and learns from each other.

Attendance

We are very proud that our pupils consistently want to come to school and we know that excellent attendance really makes a difference. Children who have good school attendance tend to do well in later life (in terms of results, jobs, friendships, and self-esteem).



Uniform

Our school uniform is available to purchase from Chroma Schoolwear, both in store (at Unit 10, Wulfric Road, Peterborough, PE3 8RF) and online. Nearly new and second hand uniform is also available from the PFA.

Admissions

If you would like your child to attend our school, please do call the office and speak to Mrs Miller or Mrs Peaks to find out further information. We would love to show you around so that you get a feel for who we are and what we do.

If you decide that it's the right school for you, all applications must be made through Cambridgeshire's Admissions department, via their website, telephone **0345 045 1370** or email admissions@cambridgeshire.gov.uk

"Children behave
impeccably both
in lessons and
at playtimes."

Ofsted | 2023



"Children's highly positive attitudes to learning are evident in the pride they take in their work."

Ofsted | 2023

Somersham Primary School

Parkhall Road | Somersham | Huntingdon | PE28 3EU

☎ 01487 840412

✉ office@somershamprimary.co.uk

Please use these details to contact all staff members. Any messages or emails will be forwarded on to the appropriate person.

We are proud to be part of Meridian Trust

Company Number 7552498 | Registered in England & Wales

Registered Office:

Meridian Trust Offices | Fen Lane | Sawtry | PE28 5TQ

☎ 01223 491600

✉ enquiries@meridiantrust.co.uk



**Meridian
Trust**

