

Health and social care

Specification

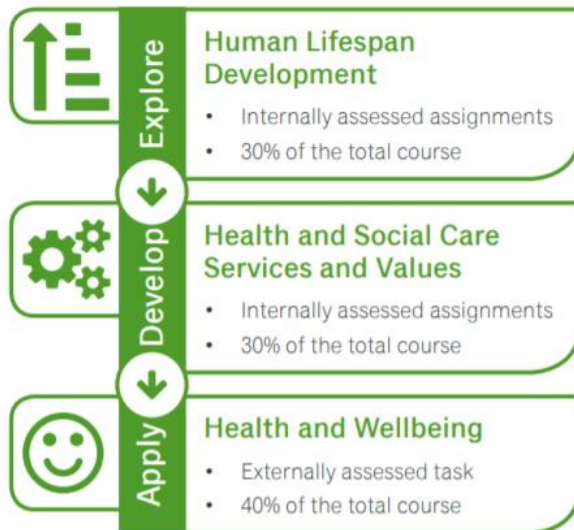
The Health and social care students are working towards the Level 1/2 BTEC Tech award in Health and Social care

How does the course work?

The course is made up of **three components**: two internally assessed and one that's externally assessed.

Our three-block structure, **explore, develop and apply**, has been developed to allow students to build on and embed their knowledge. This allows them to grow in confidence and then put into practice what they have learned.

Our assessment structure is also designed so that students can build on what they learn, and develop their assignment skills, as they move through the course.



How you can help...

Session 6 will be held every Monday and Wednesday which will give students chance to work on outstanding coursework and complete revision.

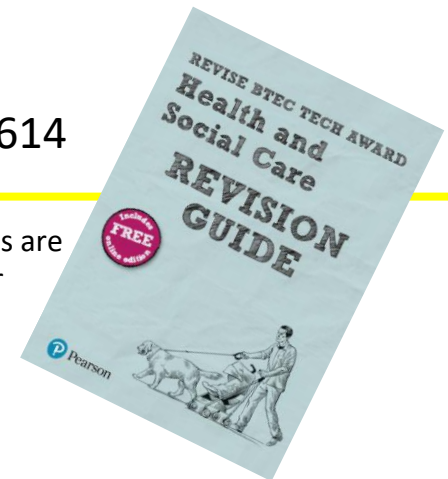
Revision

Revise BTEC Tech Award Health and Social Care Revision Guide

£5.99

ISBN: 9781292245614

(secondhand versions are available for cheaper prices)





Component 1: Explore

Students explore how individuals develop and adapt

Explore



Component 1

Human Lifespan Development

Aim: understand how we grow and develop throughout our lives

Assessment: internally assessed assignments

Weighting: 30% of total course

During Component 1, your students will:

- **explore** how individuals develop physically, emotionally, socially and intellectually over time
- **investigate** how various factors, events and choices impact individuals' growth and development
- **discover** how people adapt to life events and cope with making changes.



Component 2: Develop

Students develop knowledge and understanding of the sector and the application of care values



Develop

Component 2

Health and Social Care Services and Values

Aim: get to know how the Health and Social Care sector works and the care values that lie at the core of it

Assessment: internally assessed assignments

Weighting: 30% of total course

During Component 2, your students will:

- learn which health and social care services are available
- identify why people might need to use these services
- discover who's involved in providing these services
- explore what might stop people from accessing the services they need
- look at the care values the sector has to make sure people get the care and protection they need.

Component 3: Apply

Students pull together all they have learned and apply their knowledge in a real life scenario



Apply



Component 3

Health and Wellbeing

Aim: help improve someone's health and wellbeing

Assessment: externally assessed task, in which students create a health and wellbeing improvement plan for an individual, based on a brief

Weighting: 40% of total course

To achieve this aim, your students will:

- learn what 'being healthy' means to different people
- explore the different factors that might influence health and wellbeing
- identify key health indicators and how to interpret them
- assess an individual's health using what they've learned
- create a health and wellbeing improvement plan for that person, which includes targets and recommendations of support services available
- reflect on the potential challenges the person may face when putting the plan into action.