

YEAR 6 PARENTS MEETING



STAFF

- Columba: Miss Prout
- Draco: Mrs Bruce and Mrs Berry
- Support Staff: Mrs Wilson



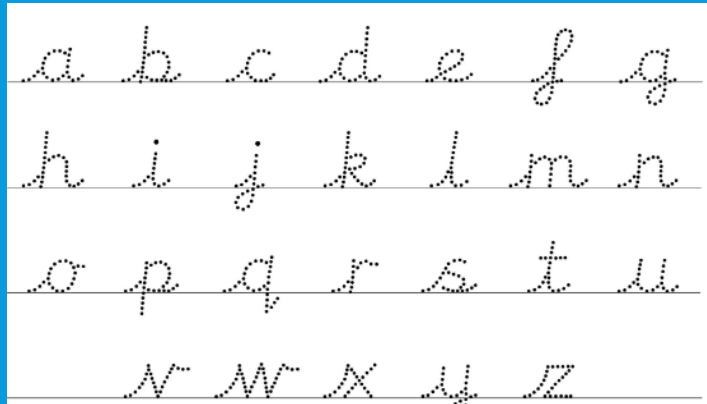
UNIFORM

- We expect all children to wear shoes. Trainers are not permitted.
- Earrings need to be **one** stud only, no characters, shapes, hoops etc. These must be removable for PE, we are not allowed to help children remove them.
- Please, please, please make sure everything – especially ties and jumpers – is named.

LEARNING LOGS

- Reading should be recorded in it. The children don't have to read directly to an adult every time although it is helpful to do so to keep an eye on comprehension, mispronunciations or whether the book is at a suitable level. Year 5 can update the record themselves, but this must be signed by an adult to confirm it has taken place. There are house points as a reward for those who read at home.
- If you write a note to us, please tell your child to tell us, we will check them weekly and don't want to miss anything.
- There is a lot at the front to support homework and learning, please encourage the children to use it at home.

ENGLISH



- Year 6 will use 'Barrowquest' to enable the children to develop their use of literacy devices, ambitious vocabulary and dialogue.
- Later, we will be looking at the text 'Pig Heart Boy' by Malorie Blackman to build writing skills through an ethical and diverse lens.
- The children will be writing non-chronological reports about the Maya civilisation linked to their history learning.

MATHS

- Measurements- children will be looking at converting and using metric and imperial measurements to solve problems.
- Area and Perimeter- children will be calculating the area and perimeter of shapes.
- Volume – children will be calculating volume with cubes and a formula.
- -percentages– the children will relate, compare and convert between decimals, fractions and percentages.
- Statistics- children will be interpreting from a range of different graphs (bar, line and pictograms).
- Arithmetic papers will be completed every other week to practise the SATS style questions.

SCIENCE

Animals including humans

- The circulatory system – identifying and explaining the functions of the heart and blood.
- Function and structure – understand how the heart pumps blood and to identify what the different types of blood vessels do.
- Health and lifestyle – we will recognize how exercise, diet, drugs and lifestyle choices impact our circulator health.

HISTORY – FIRST HALF TERM

Ancient Maya Civilisation

We will be drawing on the past learning of Ancient Egypt, Ancient Rome and Ancient Greece to investigate the similarities and differences between civilisations.

The children will have the opportunity to explore different types of evidence to help build the picture of the Maya Civilisation.

We will be learning about the religion, architecture, cities and writing systems of the Ancient Maya.

GEOGRAPHY – SECOND HALF TERM

Energy and sustainability

How can we create a sustainable future?

- We will look at different energy sources and renewable/non-renewable energy
- We will look at the pros and cons of both these sectors of the energy market
- They will also take part in debates to display their knowledge

ART

Mayan Masks

We will be looking at the work of Pablo Picasso and several other artists who have created different types of masks. After exploring the art works of the Ancient Maya, we will then design and create our own masks using clay.

PE



This term we will be doing:

- Tag rugby – to extend our knowledge on attacking and defence skills.
- Creating sequences – this will be based around developing and linking symmetrical movements, using a range of apparatus.
- Prejudice and discrimination – using dance, children will develop their understanding of prejudice and discrimination.
- Cricket – we have been given the opportunity for A Chance to Shine cricket company to come in and deliver Cricket lessons to the children with a focus of: fielding, batting, bowling, tactics and teamwork.
- PE will be on **Monday (both classes)** and **Thursday (both classes)**. PE kit must come to school on Monday morning and go home on Friday evening. This includes, Logoed T-shirt, trainers and a sweatshirt and navy or black shorts (or joggers for PE outside in winter). Children need suitable outdoor clothing for all weather types.

DESIGN AND TECHNOLOGY – FIRST HALF TERM

Cooking and nutrition

- This half term the children have been designing, making and evaluating quesadillas to celebrate ingredients from Mexican cuisine.
- In addition, we will recap our knowledge on basic hygiene and knife skills when in the kitchen.

COMPUTING – SECOND HALF TERM

Computer systems and networks

The children will build on their knowledge of computer systems, focusing on how information is transferred between systems and devices.

They will:

- Learn how search engines functions
- Discover how data is transferred
- Look at the structure of data packages

MUSIC

Programme music

The children will develop their listening skills via a range of music, and they will devise their own compositions based on what they hear and explore.

We will be looking at key words such as pitch, melody, dynamics, tempo and structure.

The children will have the opportunity to create their own themes.

PERSONAL, SOCIAL HEALTH EDUCATION

Digital lifestyles

- Children will focus on keeping themselves online by looking at how to conduct themselves
- How to report something/someone online
- Children will understand the impact that online can have on an individual

WORLDVIEWS

Who do people think Jesus was?

- We will explore the evidence for Jesus from the Roman and Jewish history as well as from the bible. We will then develop our theology skills with an in-depth look at what the bible tells us about Jesus.

Why do people put their belief into action?

- We will look at how our worldview can be diverse, change as we grow and affect our vision for the future. We will write about our own visions for the future.

LANGUAGES

The term, year 6 will focus on French vocabulary in a range of everyday situations which will prepare them for their learning in year 7 next year.

HOMEWORK

- Maths homework related to the weeks topic and will now be a sheet in their homework book.
- Spellings will be sent home weekly on a Wednesday. Spellings is now a sheet in the homework book, we have 15 spellings a week.
- Reading homework is in addition to reading their own schoolbooks.
- The more they can read the better! We expect pupils to read often (minimum 3x weekly but daily is better).
- **Homework days: Out on Wednesday, back in on Tuesday**
- **Spelling test : Friday**

ANY QUESTIONS

