



## New Student Transition Booklet





Welcome to Northstowe Secondary College, we cannot wait to meet you.

We hope this information supports you in a smooth transition to our secondary college. We have aimed this document to our new students, to go through with your Parents and Carers to discover more about your new school and answers any questions you may have.

We also have further information on the Transitions page of our website, which includes videos of the school and our students and staff, and information for parents. To find out about anything specifically at our school, please explore our website.

We very much look forward to meeting you at Northstowe Secondary College.



## **About Us**

Northstowe Secondary College is a brand-new secondary school at the heart of the Northstowe Education Campus, that opened to Year 7s in September 2019. Our aim is to provide world class education to the developing community. As a Meridian Trust school, Northstowe Secondary College benefits from having an experienced team that is creating an inclusive, innovative, and aspirational learning environment for the young people and families it serves.

The College is proud to be part of the Northstowe Learning Community, which include a primary school and a sixth-form college, which both opened in September 2024.

Northstowe Secondary College features state-of-the-art facilities for science, catering and hospitality, the arts, sports and leisure, forming a comprehensive offer for our students and also our local community.

Northstowe Secondary College holds the three key values of Kindness, Curiosity and Hard work at the heart of all that it does. All staff are expected to demonstrate those values towards others and to explicitly teach these to the children. We are an inclusive family and as a small group of staff in a brand-new school, we all go the extra mile however, we promote and support a good work life balance, we are a kind and supportive team, with children's educational experience at the centre of all we do.



## Lessons

Unlike at primary school, you will be taught in different classrooms and move from one classroom to the next for lessons and could be taught by five different teachers per day. You will be given an individual timetable which tells you all your lessons, which teacher it is with, and which classroom it is in.

Each teacher has their own classroom, and you must go to them for your lesson. It normally takes a few weeks to remember teachers' names and which subjects are taught where, but this is normal when you start secondary school.

At NSC we address staff as 'Sir' or 'Madam'.

You will be taught 5 lessons a day, which last for an hour each. You will also have a Tutor Time everyday, as well as a break and lunch. The timings of the school day can be seen below.

	<b>Start</b>	<b>Finish</b>
<b>Registration</b>	8:50	8:55
<b>Period 1</b>	8:55	9:55
<b>Period 2</b>	9:55	10:55
<b>Attenborough &amp; Parks Tutor Time / Dyson &amp; Glennie Break</b>	10:55	11:15
<b>Dyson &amp; Glennie Tutor Time / Attenborough &amp; Parks Break</b>	11:15	11:35
<b>Period 3</b>	11:35	12:35
<b>Period 4</b>	12:35	13:35
<b>Lunch</b>	13:35	2:10
<b>Period 5</b>	2:10	3:10

## Subjects

In year 7, you will be taught the core lessons of English, Maths, Science, and French. As well as Performing Arts (Dance, Drama and Music on rotation), History, Geography, How to Thrive, Design Technology (Woodwork, Graphic design and Food Nutrition on rotation), Art, Physical Education, and Ethics. You can see what you will be learning in each of these subjects on the curriculum pages of our website.

In year 8, you will be able to pick which subjects you would like to study alongside our core subjects to study as GCSES.

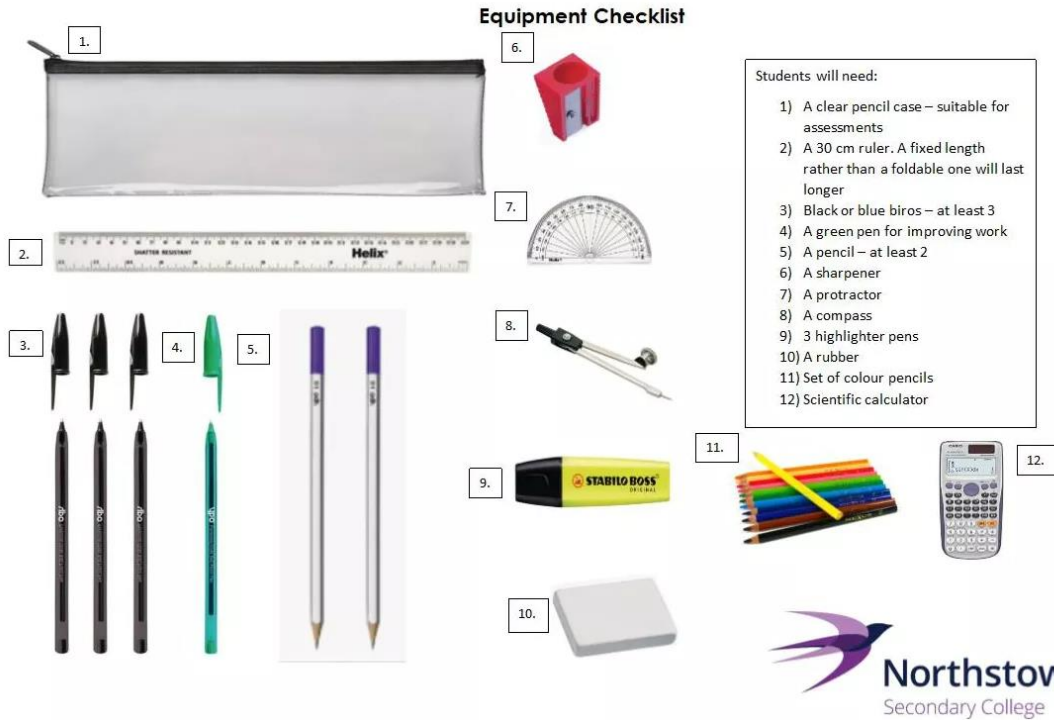


## What to bring with you

As you will be taught in different classrooms, you must take everything with you, and nothing can be left anywhere in the school. You are responsible for your property. We suggest having a large school bag to ensure you can fit everything you need in it. You will need to bring a school bag and packed lunch (if you are having it). PE kit should only be brought into college on days when PE takes place, to avoid you having to carry it when you do not need it.


You will need to bring the correct books and equipment every day, arrive promptly, unpack what you need for the lesson, settle down quickly and be ready to work. Our lesson equipment checklist can be seen below:

**Equipment Checklist**



Students will need:

- 1) A clear pencil case – suitable for assessments
- 2) A 30 cm ruler. A fixed length rather than a foldable one will last longer
- 3) Black or blue biro – at least 3
- 4) A green pen for improving work
- 5) A pencil – at least 2
- 6) A sharpener
- 7) A protractor
- 8) A compass
- 9) 3 highlighter pens
- 10) A rubber
- 11) Set of colour pencils
- 12) Scientific calculator



## Homework

Homework is an important part of learning, we call homework “PREP”. At NSC we use Microsoft Teams. Teachers will set PREP in the class team, including attaching any helpful links or resources. Parents can log into MCAS which will allow them to see what PREP is due and when this is completed. Take pride in your PREP and complete it to the best of your ability. Do not try to do it whilst doing other things. Make sure it is handed in on time.



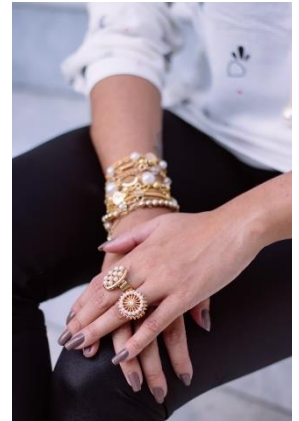
## Uniform

The first impression you make is how you look in the College uniform. Always try to be smart in your appearance and wear only the approved items of uniform and not the latest fashion alternative. More information about uniform can be found on our [Uniform page](#). Make sure you have space in your bag for any unworn uniform, as this cannot be left anywhere and must be always carried around with you.

## **Jewellery and Make Up**

You may wear a watch to make sure you are not arriving late to lessons. The College also allows a maximum of two plain stud earrings in each ear, a maximum of one nose stud in the nose and one discreet necklace. No other piercings, bracelets or rings are allowed. These will be confiscated if a teacher sees you wearing them, and a letter sent home.

Makeup is discouraged at College. If you wear makeup, it must be discreet. If makeup is obvious, you will be sent to the House office and asked to remove it. Nail varnish, including Acrylic or shellac nails are not permitted. Please see the uniform policy for more information.



## **Mobile Phones**

Mobile phones are not allowed at the College. If you have to have a mobile phone with you, we ask that it is turned off and left in your school bag for the whole school day. If you have a mobile phone and it is seen or heard by a member of staff it will be confiscated. On the first occasion, the phone can be collected from Reception at the end of the day. On a second occasion, a letter will be issued, and you must produce the tear off slip from this letter to get your phone back. Parents/carers will be asked to make an appointment to collect your phone if it is confiscated again. The College accepts no responsibility for a phone which is lost, stolen or damaged on site. If you need to contact your Parents or Carers during the school day, please speak to the Student Support Assistant in your House office.

## **Lunch Arrangements**

All lunch should be eaten in the school hall or canteen. Food and drink must not be consumed in corridors. Only water is allowed.

You can also bring in a packed lunch. This is eaten in the canteen. Please note, we are a nut free school so foods that you bring in cannot contain nuts.

The College canteen uses a cashless system, you pay with your fingerprint on our fingerprint scanner. We use a system called MCAS. Your parents/carers will be issued with a letter, usually via email that allows them to open an account online, where they put money for you to spend on food. You can also pay for school trips too using this same account. This means that you never have to carry cash or worry about forgetting dinner money.

We advise all students to carry a water bottle as water is available at water coolers throughout the school.





## Tutor Time

Your tutor is the person you contact if you have any worries or issues at school. If it is subject specific, you will need to talk to your subject teacher, however. Your tutor is there to ensure you have a good experience of school life, as well as guiding and supporting the personal, academic, and wider achievement of each individual student within their form.

During Tutor Time, you will have assembly one day of the week, and on the other days you will do activities such as for numeracy and literacy. You will also have the chance to be given school information and notices and find out more about your peers. On a Friday we have our House challenges.

At NSC, all tutor groups are part of our house system. There are four houses: Attenborough, Dyson, Glennie and Parks. Depending on which tutor group you are in, will decide which house you are in. We have Inter house competitions that run throughout the year, and events like Sports Day add points to the houses so that at the end of the year one house wins 'House of the year'.

## Enrichment

At NSC, we run lots of extracurricular activities. Such as clubs, PLEDGES, student leadership, trips and Duke of Edinburgh awards (DoFE).

We run lots of trips throughout the year and these are different for each year group. In Year 7, you may visit Warwick Castle on our history trip, and Norfolk Lakes for a residential, as well as many more. All trips are to do with what you are being taught in your lessons.

Our PLEDGES programme is an award scheme in which students are required to do one of a variety of tasks in each section in their own time. Each student is expected to complete at least one PLEDGE in every Bronze section by the end of year 9 and Silver section by the end of year 10. For those who want to progress more quickly there is a Gold PLEDGE award and this will be presented to each successful student by a senior member of the Meridian Trust staff at a special award ceremony.

	Participation	Leadership	Excellence	Diversity	Giving	Environment	Service
BRONZE	Take part in an activity or sport for 10 minutes.	Take part in a school or community activity.	Take part in a school or community activity.	Take part in a school or community activity.	Take part in a school or community activity.	Take part in a school or community activity.	Take part in a school or community activity.
SILVER	Take part in an activity or sport for 20 minutes.	Take part in a school or community activity.	Take part in a school or community activity.	Take part in a school or community activity.	Take part in a school or community activity.	Take part in a school or community activity.	Take part in a school or community activity.
GOLD	Take part in an activity or sport for 30 minutes.	Take part in a school or community activity.	Take part in a school or community activity.	Take part in a school or community activity.	Take part in a school or community activity.	Take part in a school or community activity.	Take part in a school or community activity.

Many of the PLEDGES have at their core the 'British Values' of:  
 • Democracy • The rule of law • Individual liberty • Mutual respect • Tolerance

We offer a variety of different clubs from Sports, and playing for our sports teams, to computing. All of our clubs can be found on our website and are free to attend. We encourage students to take part in at least one club.

## Glossary of Terms

At NSC, we are aware that the words you can hear around college regularly you may not have come across before. Please click [here](#) to view our very own Glossary of Terms.

## Frequency Asked Questions (FAQs)



### What time does school start and finish?

Lessons start at 8:50am and finish at 3:10pm. You must be in school 10 minutes before the day starts, to allow you plenty of time get to your lesson and not be late.

All students must go straight to the main hall and dining hall at NSC and wait there for first period to start. You are welcome to come into school from 8.15am.

Although the school day finishes at 3.10pm, there are clubs after school on most nights that you might want to join. This includes Homework Club, where you will be able to get help with anything you are struggling with or use a computer. More information about clubs can be found on our clubs webpage.

If you have made a mistake during the day, we expect you to see your teacher at the end of the day to fix it. It will take no more than 10 minutes.

### Which entrance do I use?

All students will use the main student entrance, which is to the rear of the school. There is a side gate by the sports hall for those who are walking, and a further entrance by our sports pitches for those cycling, where there are bike racks available for you to use. Don't worry, staff will be on hand to direct you as well.

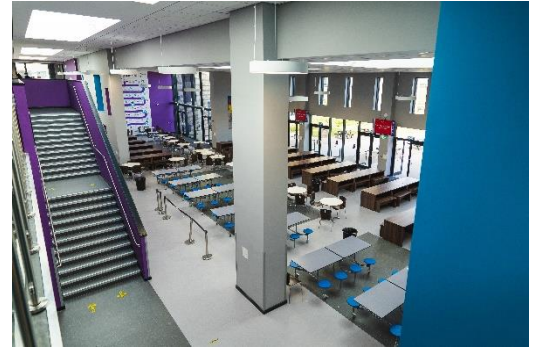


### Will I be with my friends?

In lessons, students will be mixed and there are lots of opportunities to make friends, which is one of the best things about secondary school, you will begin to find other people with similar interests, ideas or sense of humour!

### Will I get lost?

Maybe! However, it will not take long for you to get used to the buildings and classrooms, particularly in the first few years where we will have less students. The most important thing to do is ask – if you are unsure of anything. We have lots of staff and students who will help, they were once new to the school layout too.



### What happens if I don't understand the work?

Just ask. No-one will be cross with you for asking if you are unsure. We would much rather you ask than struggle or miss out on learning something. Alternatively, you could ask the person sat next to you or check your book – have you done something like this before? If you are still unsure – put your hand up and ask.

**We look forward to meeting you!**



If you have any questions, or need anything, please contact us  
at [admissions@northstowe.education](mailto:admissions@northstowe.education).