



AS AND  
A-LEVEL  
ENGLISH  
LITERATURE A

AS (7502)  
A-level (7502)

**Specifications**  
For teaching from September 2015 onwards  
For first exams in May/June 2016 onwards  
For second exams in May/June 2017 onwards

© AQA 2015

# How to support your child

---

English Literature

# AQA: English literature: spec a

---

<b>Paper 1: Love Through the Ages</b>		
<ul style="list-style-type: none"> <li>➤ 3 hours</li> <li>➤ 75 marks</li> <li>➤ 40% of A-level</li> <li>➤ Open book in section C only</li> </ul>		
<u>Section A (25 marks)</u>  <b>Shakespeare:</b> 'Othello' Passage based question with linked question (just like GCSE!)	<u>Section B (25 marks)</u>  Unseen poetry Essay question comparing two unseen poems	<u>Section C (25 marks)</u>  AQA Anthology of Love Poetry Through the Ages (pre-1900) Daphne du Maurier: 'Rebecca' Essay question linking two texts. Open book

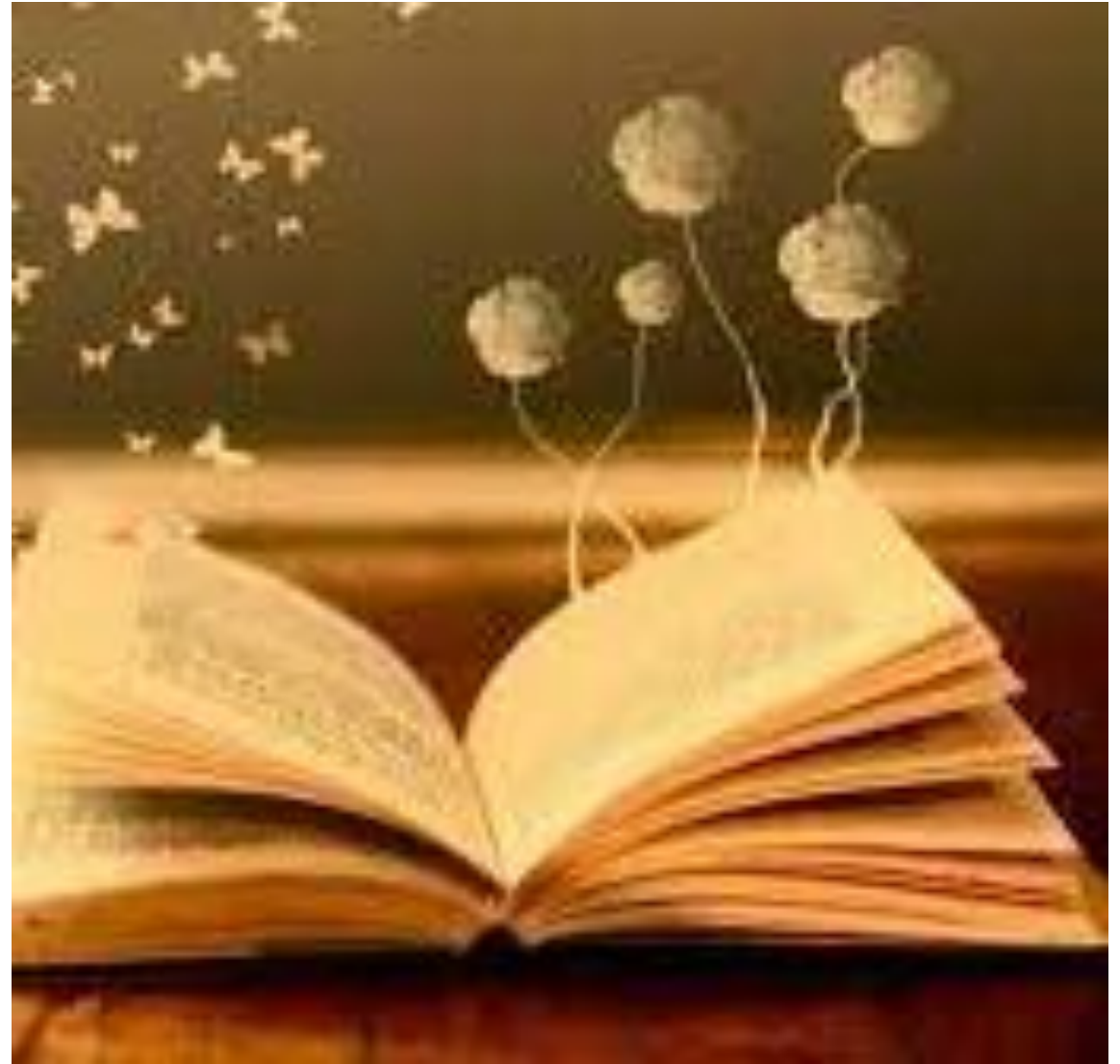
<b>Paper 2: World War One and its Aftermath</b>	
<ul style="list-style-type: none"> <li>➤ 2 hours 30 minutes</li> <li>➤ 75 marks</li> <li>➤ 40% A Level</li> <li>➤ Open book</li> </ul>	
<u>Section A (25 marks)</u>  <b>Sebastian Faulks:</b> 'Birdsong' Or <b>Pat Barker:</b> 'Regeneration' (student vote for class text)  Essay question on set drama text.	<u>Section B (50 marks)</u>  <b>Contextual linking.</b> One question on an unseen prose extract (25 marks) and one question linking prose 'The Wipers Times' and poetry 'The War Poems of Wilfred Owen' (25 marks)

<b>NEA: Texts Across Time</b>
<ul style="list-style-type: none"> <li>➤ 50 marks</li> <li>➤ 20% of A Level</li> <li>➤ Assessed by teachers, moderated by AQA</li> </ul>
Comparative critical study of two texts, at least one of which must have been written pre-1900. Extended essay (2500 words (excluding quotations and bibliography, which must be included). Titles and texts to be independently chosen by individual students and verified by teacher.

# Obvious...but....

---

- Encourage a love of reading
- It can feel indulgent, but this is essential, why study a subject you don't invest in?
- In preparation for the NEA students should be able to make an informed choice of the texts they wish to reference because they have a choice, not because that is all they have read



# Explore, think, discuss

---

- So many subjects are content driven, and so is the English literature course - however, it is so much more than that, studying an English discipline is an opportunity to study every subject within one.
- It is essential that your child becomes confident in not only what they think about a particular idea, topic or issue, but why? An encouragement of critical thinking is an essential skill for this course.

## 8 WAYS PARENTS CAN SUPPORT CRITICAL THINKING AT HOME

- 1 Think critically as a habit
- 2 Debate everything!
- 3 Provide access to diverse, quality reading materials
- 4 Practice Claim-Evidence reasoning
- 5 Help them learn from everything
- 6 Make critical thinking a game
- 7 Teach critical thinking as a mindset
- 8 Explore the benefits of critical thinking

**teachthought**  
WE GROW TEACHERS



# Additional experiences

---

Theatre – explore how directors interpret texts

---

How context enables understanding

---

Capturing the zeitgeist

---

Connect ideas and references

---

Research and visit places that inspired writers to pen their ideas

---

Use Sora to support wider reading

# Getting started with Sora



With Sora, you can get free ebooks and audiobooks from your school.

1

Install the Sora app from the Apple App Store or Google Play Store, or go to [soraapp.com](https://soraapp.com).

2

In Sora, find your school (or enter your school's setup code), then sign in.

3

Setup code: uksecondary

Browse the **Explore** tab and borrow a book. Your book will open so you can start reading right away.

4

Close the book and go to your **Shelf** to see all your books (including assignments). From there, you can:

- Tap **Open Book** or **Open Audiobook** to read or listen to the book.
- Tap **Options** to renew or return the book, get to your notes and highlights, and more.

# What can be done to support at home:

---

Provide time and space for quiet study.

---

Engage in discussion and conversation about what is being learned and why?

---

Ensure extension work is fully invested in and completed on a weekly basis.

---

Be aware of assessment dates and support your child in their preparation.

---

If you are concerned about your child's progress/confidence/engagement please don't hesitate to contact Catherine Hobden: [chobden@cmatrust.net](mailto:chobden@cmatrust.net) to ensure that your child has the highest level of support.