

edexcel 

# A Level English Language and Literature



## Specification

Pearson Edexcel Level 3 Advanced GCE in English Language and Literature  
(9EL0)

First teaching from September 2015

First certification from 2017

Issue 1

ALWAYS LEARNING

PEARSON

# How to support your child

---

English Language and Literature

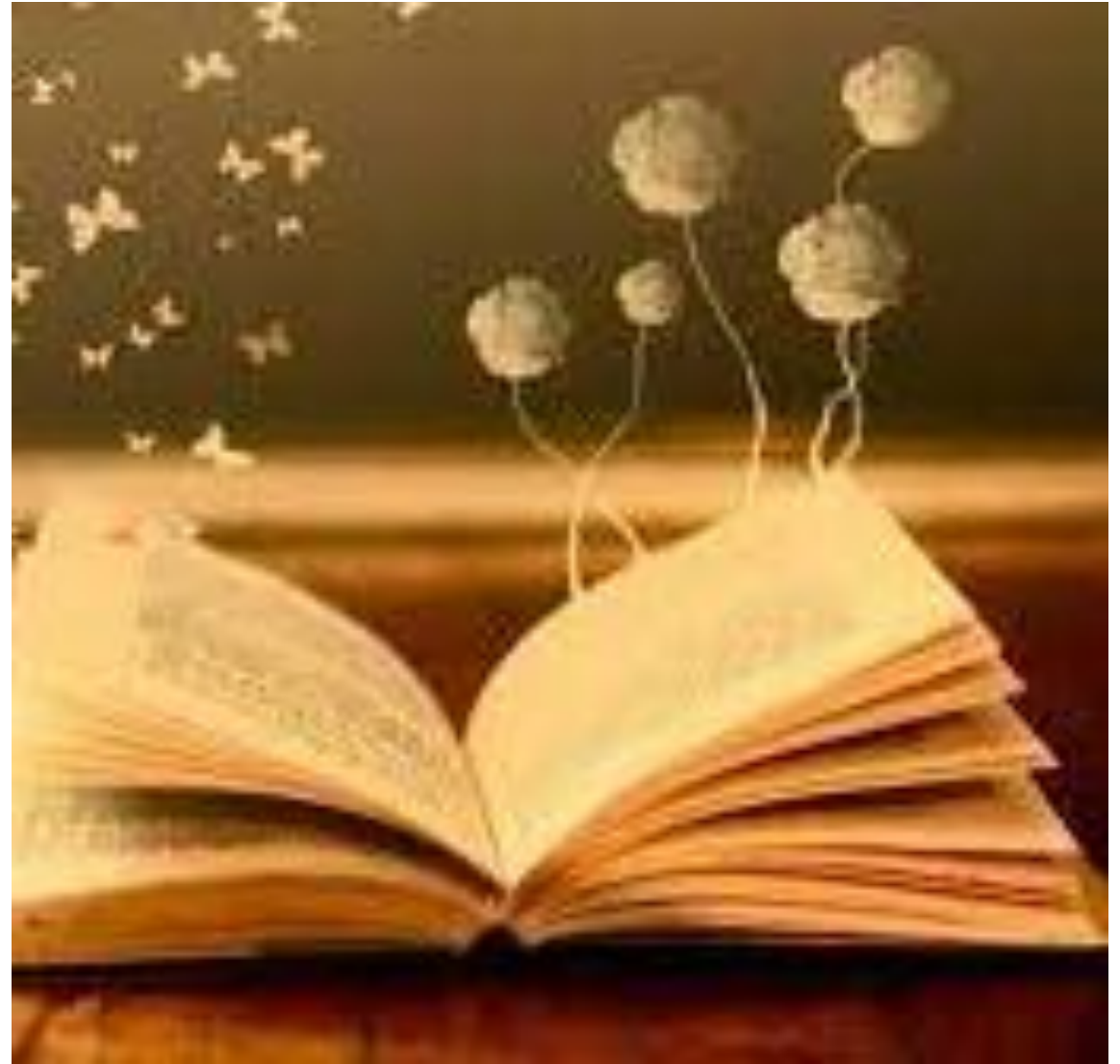
# Edexcel: English language and literature

Component 1: Voices in Speech and Writing	Component 2: Varieties in Language and Literature	Component 3: Investigating and Creating Texts
50 marks / 40% 2 hours 30 minutes	50 marks / 40 % 2 hours 30 minutes	60 marks / 20%
<ul style="list-style-type: none"><li>➤ Written examination</li><li>➤ Open book (clean copy provided)</li><li>➤ 2 sections</li><li>➤ <b>Section A: Anthology</b> - one comparative essay on one unseen 20<sup>th</sup> or 21<sup>st</sup> century text with one text from anthology (AO1, AO2, AO3, AO4)</li><li>➤ <b>Section B: Drama</b> – one extract-based essay question on the chosen drama text (<i>A Streetcar Named Desire</i>) (AO1, AO2, AO3)</li></ul>	<ul style="list-style-type: none"><li>➤ Written examination</li><li>➤ Open book (clean copy provided)</li><li>➤ Theme of Society and the Individual</li><li>➤ <b>Section A: Unseen Prose Non-fiction</b> – one essay question on an unseen prose non-fiction extract (AO1, AO2, AO3)</li><li>➤ <b>Section B: Prose Fiction</b> – one comparative essay question on prose anchor text (<i>The Great Gatsby</i>) and one other text (<i>A Raisin in the Sun</i>) (AO1, AO2, AO3, AO4)</li></ul>	<ul style="list-style-type: none"><li>➤ Free choice of topic</li><li>➤ <b>Assignment 1:</b> 2 pieces of original writing: one fiction and one non-fiction approx. 750-1000 words per text (AO5)</li><li>➤ Assignments linked by topic</li><li>➤ Assignments based on existing writer's / genre style model</li><li>➤ <b>Assignment 2:</b> one analytical commentary reflecting on the 2 produced pieces approx. 1000-1250 for commentary (AO1, AO2, AO3, AO4)</li></ul>

# Obvious...but....

---

- Encourage a love of reading
- It can feel indulgent, but this is essential, why study a subject you don't invest in?
- In preparation for the NEA students should be able to make an informed choice of the texts they wish to reference because they have a choice, not because that is all they have read



# Explore, think, discuss

---

- So many subjects are content driven, and so is the English language and literature course – however, it is so much more than that, studying an English discipline is an opportunity to study every subject within one.
- It is essential that your child becomes confident in not only what they think about a particular idea, topic or issue, but why? An encouragement of critical thinking is an essential skill for this course.

## 8 WAYS PARENTS CAN SUPPORT CRITICAL THINKING AT HOME

- 1 Think critically as a habit
- 2 Debate everything!
- 3 Provide access to diverse, quality reading materials
- 4 Practice Claim-Evidence reasoning
- 5 Help them learn from everything
- 6 Make critical thinking a game
- 7 Teach critical thinking as a mindset
- 8 Explore the benefits of critical thinking

**teachthought**  
WE GROW TEACHERS



# Additional experiences

---

Theatre – explore how directors interpret texts

---

How context enables understanding

---

Explore different languages and their influence upon the English language – research how tone changes in different contexts

---

Connect ideas and references

---

Research and visit places that inspired writers to pen their ideas

---

Use SORA to support wider reading opportunities

# Getting started with Sora



With Sora, you can get free ebooks and audiobooks from your school.

1

Install the Sora app from the Apple App Store or Google Play Store, or go to [soraapp.com](https://soraapp.com).

2

In Sora, find your school (or enter your school's setup code), then sign in.

3

Setup code: uksecondary

Browse the **Explore** tab and borrow a book. Your book will open so you can start reading right away.

4

Close the book and go to your **Shelf** to see all your books (including assignments). From there, you can:

- Tap **Open Book** or **Open Audiobook** to read or listen to the book.
- Tap **Options** to renew or return the book, get to your notes and highlights, and more.

# What can be done to support at home:

---

Provide time and space for quiet study.

---

Engage in discussion and conversation about what is being learned and why?

---

Ensure extension work is fully invested in and completed on a weekly basis.

---

Be aware of assessment dates and support your child in their preparation.

---

If you are concerned about your child's progress/confidence/engagement please don't hesitate to contact Catherine Hobden: [chobden@cmatrust.net](mailto:chobden@cmatrust.net) to ensure that your child has the highest level of support.