

READY | RESPECTFUL | SAFE  
KIND | HARDWORKING | AMBITIOUS

# NenePark Academy



## *Sixth Form Prospectus*



# Welcome To *Nene Park Academy*

02

Welcome from the Principal and the Head of Sixth Form

04

Choosing your course

05

Subject grade requirements



## A message from the Principal

**Thank you for considering Nene Park Academy for your Sixth Form education. Our Sixth Form is the pinnacle of our educational provision and as such we endeavour to be the best provider we can be, going above and beyond normal expectations to meet the individual and collective needs of our students, so they can be the very best and most successful versions of themselves during their time with us, and beyond.**

We consider it an honour when so many of our current students choose to continue this vital phase of their education with us. Equally as pleasing is the yearly addition of students from other schools who choose to join us due to the growing success of our Sixth Form curriculum and resulting student outcomes.

We are always delighted to see so many of our students be successful at Level 3 study and then leave us with the qualifications, range of experiences and skills to progress successfully and confidently to higher education, apprenticeships or the world of work, in their chosen career.

Our 'Values' apply equally to the Sixth Form as to the rest of the Academy.

Here at Nene Park Academy we:

- Commit to the pursuit of excellence
- Encourage individual achievement and high standards
- Provide a high quality learning environment
- Extend the boundaries of learning
- Value people

This prospectus outlines the expanding provision at the Academy and the flexible timetable model that enables students to follow either traditional A level, or a combination of both A level and Vocational Level 3 qualifications.

Our Sixth Form enrichment programme provides a breadth of experience for your development as a confident adult. We recognise the importance of personal development opportunities and therefore support and monitor the individual programmes for each student through our Academic Mentoring system. This runs alongside Sixth Form students' full immersion into the Academy's House system and vertical tutoring programme, giving them the best of both worlds in terms of pastoral and academic support, in what is probably the most important two years of their education.

The Sixth Form Open Evening and circulation of this Prospectus marks the start of the formal transition process from Year 11 to our Sixth Form and Level 3 study. You will then complete an application form which will form the basis of an interview with the Sixth Form Team, where you can explore the most appropriate curriculum pathway for you and your career aspirations. Independent careers advice and guidance should also be available to you from your school, to help you in making an informed decision about your next steps.

**We wish you every success in your final GCSE year as you prepare yourself for the challenges and excitement of Nene Park Academy's Sixth Form, and look forward to you joining us in September for the next exciting stage of your education.**

Mr Robin Grover  
Principal



06

Sixth Form enrichment

08

Sixth Form experience

11

Results and life after NPA

12

Student experience



13

How to apply

14

Health and Beauty

16

Peterborough United Scholarship

18

New Sixth Form Space

## A message from the Head of Sixth Form

**Welcome to Nene Park Academy's Sixth Form.  
We are delighted that you're thinking of joining us.**

Nene Park Academy is a busy, vibrant, exciting community of young people who want to make a difference: it is a half-way house between school and university or school and the world of work. We believe that as Sixth Formers, you have a duty to play an active role in the leadership of our Academy and we try to provide varied and engaging ways for you to do this.

We want outstanding achievement for all our students no matter what path they choose to follow. Our tutorial system and small class sizes ensure individual attention is plentiful; we also encourage students to be independent and think for themselves. Not only are you part of a tutor group during your time with us, you also have a Sixth Form mentor for one to one support. Your Sixth Form mentor

is a Sixth Form specialist who will ensure that you are challenged to succeed at the best possible level. We have a careers advisor who will also work with you, so whatever your future plans are, we will help to ensure you get there.

Our Sixth Form has expanded considerably over the past few years; student outcomes are excellent and have improved alongside this growth. Increasing numbers of students from other schools in the area are choosing our Academy for their continued studies. We hold high expectations for ourselves and our students because we want you to have the chance to be the best version of yourself at the end of your time with us.

Students at Nene Park Academy enjoy the use of a purpose built Sixth Form Centre. The newly designed Sixth Form Centre has breakout rooms that can be booked and a range of computer resources. There

are dedicated areas for silent study and support from our Sixth Form Centre Manager. For times when you are not studying, we also have a café with dining facility solely for the use of our Sixth Form students.

This prospectus will provide you with information about the Sixth Form at Nene Park Academy and will give you an insight into our ethos and values. It is important you take the time to consider and select your Post 16 courses as these will shape your next steps in life

**Dr Matthew Thorne**  
[mthorne@neneparkacademy.org](mailto:mthorne@neneparkacademy.org)

*(Please note that the course outlines set out in this prospectus are subject to change due to uptake of the courses along with government reforms of Post-16 education. For the most up to date information, please refer to UCAS progress)*





# Choosing your courses

The majority of students will opt for three courses in Year 12. Broadly speaking these are divided into A-level facilitating subjects, other academic subjects and vocational subjects. What you decide to take is largely up to you and will be determined by your wider academic/career aims. However, a number of key points need to be considered when making your decision for Year 12, and later as you move into Year 13.

1. Facilitating subjects are those subjects deemed to be the most rigorous academic foundation for leading universities and indeed courses. For these universities, there is an expectation that at least two of your A-levels will fall within this category. These subjects are: Chemistry, Biology, Physics, Maths, English, Languages, History and Geography
2. Academic subjects are A-level courses other than those listed above.
3. Vocational subjects offered at NPA are most commonly BTEC courses or VTCT courses in the salon.
4. It is important to think carefully about your future plans, be they university, an apprenticeship or work, the courses you choose should enable you to progress to the next level. It is possible to take a combination of A-level and vocational subjects so long as they fit within the overall number of subjects.

■ All students will take internal exams in all subjects at the end of Year 12. You will be expected to pass these to avoid resits and a possible review of your place in September of Year 13.

# Sixth Form Entry Requirements

Academic	
Subject	Grade Requirements
Art	Standard with grade 6 in Art
Biology	Standard with grade 6 in GCSE Biology and in Maths or 6-6 in Combined Science and a 6 in Maths
Business Studies	Standard with grade 5 in GCSE English (Lit or Lang) and Maths (and 5 in GCSE Business Studies if taken)
Chemistry	Standard with grade 6 in GCSE Chemistry and in Maths or 6-6 in Combined Science and a Grade 6 in Maths
Drama	Standard with grade 5 in GCSE Drama. An audition will be required for those not studying GCSE Drama
Economics	Standard with grade 6 in English Language and Maths
English Lang & Lit	Standard with grade 5 in English Language
English Lit	Standard with grade 6 in English Literature
Extended Project Qualification	Standard
Film Studies	Standard
French	Standard with grade 6 in GCSE French
Food Tech	Standard with grade Merit in Hospitality and Catering or 5 in GCSE Food Technology
Geography	Standard with grade 5 in GCSE Geography
History	Standard with grade 5 in GCSE History
Maths	Standard with grade 6 in GCSE Maths
Music	Standard with grade 5 in GCSE Music and instrumental grade 5+ (e.g., Trinity, ABRSM, RSL) or equivalent
PE	Standard with grade 6 in GCSE PE and and grade 5 in Biology or 5-5 combined science
Photography	Standard with grade 5 in art or on approval form CAL
Physics	Standard with grade 6 in GCSE Physics and in Maths or 6-6 in Combined Science and a Grade 6 in Maths
Polish	Standard with grade 6 in GCSE Polish
Psychology	Standard with grade 5 in English Language, Maths and Biology or 5-5 in combined Science.
Sociology	Standard (with grade 5 in GCSE Sociology if taken)
Spanish	Standard with grade 6 in GCSE Spanish

Vocational	
Subject	Grade Requirements
Applied Science	Standard (must include 4-4 in GCSE Science and grade 4 in GCSE English Language and Maths)
Beauty Therapy - Theatrical & Media Makeup	Standard
Construction and Built Environment	Standard with grade 5 in GCSE English Language, Maths and Combined Science and Merit in L2 Construction
Criminology	Standard with grade 5 in GCSE English Language, 4-4 in Combined science or a 4 in GCSE Biology
Hairdressing	Standard
ICT	Standard
Peterborough United Football Scholarship	Standard and performance trial
BTEC Sport (Single and Triple)	Standard with grade 5 in GCSE PE or Merit in L2 Sport BTEC
Health and Social Care	Standard with grade 5 In GCSE English Language and a grade 5 in Biology or Combined Science
Further Maths	Grade 8 in GCSE Maths
Core Maths AS	Grade 4 in GCSE Maths

## Standard Entry Requirements

Standard Entry Requirements Standard Entry Requirements are 5 GCSE subject at a minimum grade 4 or equivalent including Maths and English Language. Student subject choices will be considered on an individual basis if they require an English Language or Maths resit.

Students who require both English Language and Maths resits will be considered on a case by case basis.

Please note courses in this Prospectus will run subject to student numbers. The option blocks will be determined by the most popular student combinations of courses. All applications made after the deadline will need to choose from the determined option blocks. If your subject combination does not work you will be informed at interview.

# Sixth Form Enrichment Programme

Alongside your core academic studies, it is important that you continue to develop the experiences and skills that will set you apart from your peers as you compete for university, apprenticeships or the world of work. At Nene Park Academy we operate an 'IDEALS Programme', the key elements of which are outlined below. However, at the heart of this is the importance of leadership.



## Sixth Form IDEALS

INTERNATIONALISM	DEMOCRACY	ENVIRONMENTALISM	ADVENTURE	LEADERSHIP	SERVICE
Is about discovering and embracing similarities between cultures and nationalities, promoting lasting understanding, tolerance and respect	Encompasses a sense of equality, fairness, justice, self-discipline, personal responsibility and a desire to do what is right for the greater good	Centres on the significance of understanding mankind's place in the universe, the forces that shape our surroundings and the impact we have	Is characterised by those who push themselves beyond their perceived limits, cross boundaries and discover that they are capable of more than they thought possible	Recognises that successful leaders are driven by a desire to be of service to others and to nurture, guide, develop and help the to improve and succeed	Celebrates personal, social, and ethical development through practical experience that brings sustainable support and benefit to others
Completion of a language exchange program online or in-person  Hosting or joining international student clubs  Creating a podcast/blog/video series about global issues  Organising cultural days or international food festival  Complete 12 weeks on Dulingo	Joining or starting a student council  Facilitating debates or forums on current events  Participating in a youth parliament or youth advisory council  Register to vote using electoral roll  Create a tutor time quiz to promote democratic learning	Leading or joining the school climate change action plan group  Supporting the Forest school with session 6/extra-curricular activities & trips  Promoting to reduce plastic or increase recycling  Walk or bike to school for a minimum of 12 weeks  Purchasing a re-useable bottle	Organising or joining outdoor adventure camps  Taking part in the Duke of Edinburgh Award  Participating in adventure races or team-building obstacle courses  Learning a new extreme or outdoor sport (rock climbing, Kayaking etc)  Go to a live event with friends	Serving as a team captain or club leader  Organising school or community events  Leading peer mentoring or tutoring programs  Completing the Sport Leaders course/ CCF as part of the enrichment programme  Attending youth leadership conferences or workshops	Volunteering at shelters, food banks, or community centres  Actively raising monies or volunteering time to their house charity  Donating a pint of blood to save up to 3 lives  Mentoring students in lower years through the house teams  Organising a charity walk/run/bike ride



## 81 Things Before YOU'RE 18

#npachallenge81

**The Adventurer**

- Go to a sporting event with friends
- Go to a live event

**The Discoverer**

- Take a tour of a university
- Complete the family shop for at least a week
- plan and cook a 3 course meal for friends and family
- Plan a trip with friends to London for the day

**The Champion**

- Organise a charity event
- Get a part time job
- Have an interview
- Create a monthly budget then live on it
- Register to vote

**The Challenger**

- Learn to drive
- Sign up to ncs
- Get a provisional driver's licence
- Speak/present in front of an audience of 50 or more
- Lead a younger year group in an activity of interest to you
- Book your own medical appointment
- Volunteer in the community
- Go for a long walk
- Complete a project and execute diy project eg. painting or upcycling





You will be encouraged to take part in the opportunities that are provided to help you to develop the skill and attributes required to become a successful young adult whatever you choose to do beyond Sixth Form. You will be assigned a Sixth Form mentor who will meet with you regularly to guide you towards:

- Additional reading to support your studies and wider education.
- Developing your problem solving and study skills, as well as deepening your social, moral, spiritual and cultural knowledge and understanding.
- Choosing the right path and making good choices for the future while ensuring you get the grades to get there and have the knowledge and experiences to make you stand out above other candidates.
- Selecting the right student experience – Sports, Professional, Academic or Employment and Apprenticeships.

# Sixth Form Student Experience

In Year 12 all students will take part in Personal Development sessions which will help to prepare students for life after Nene Park Academy. Students will also select an enrichment activity. Some of the options are on the next pages, they are subject to timetabling so may change depending on staff availability.

In Year 13 students continue to participate in Personal Development sessions, these include support with applications to University, applying for apprenticeships and CV writing in preparation for applying for jobs. We also work on study and revision skills in preparation for final exams.

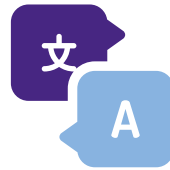
The Personal Development programme is bespoke and written specifically to the needs and requirements of Nene Park Academy Sixth Form students. All students have the opportunity to join the Senior Student Leadership Team, work with the Student Council and apply for the position of Head Student.





## THE EXTENDED PROJECT QUALIFICATION (EPQ)

The EPQ is an opportunity to study an area you are interested in, either because you want to study it at university, pursue it as a career, and because it just really fascinates you. It carries UCAS points. You choose a topic, plan, research and develop your idea, decide on, produce, present and evaluate your finished product. Your finished project could be an extended essay, production (e.g. charity event, sports event), piece of art, computer game or any other artefact. Top universities see the EPQ as evidence that you are an independent learner with the essential skills to succeed at university. It also gives you the opportunity to make informed choices about what you would like to study after A-Levels, and where.



## COMMUNITY LANGUAGES

Are you interested in improving your language skills? We offer the following languages as community languages at Post 16;

- Arabic
- Modern Greek
- Gujarati
- Bengali
- Japanese
- Modern Hebrew
- Biblical Hebrew
- Punjabi
- Polish
- Portuguese
- Turkish
- Urdu
- Italian
- Russian

You will tackle a range of issues and debates and really get your teeth into an in-depth study of relevant topics, such as immigration or young people's role in politics. Our students often comment on how much they have learned in the course aside from the language itself.

Topics include;

- Social issues and trends
- Political and artistic culture
- Grammar
- Works: Literary text and films
- Independent research project



## MENTAL HEALTH STARTS WITH ME

Do you want to raise awareness of mental health issues, reduce stigma surrounding them and work to improve the emotional wellbeing of students at NPA? Then this session is for you, join a group of like-minded young people who want to challenge stigma and discrimination, find out a bit more about a range of mental health problems, techniques to minimise their impact and ways to get people talking to help to normalise people's attitudes towards talking about mental health.

Around 1 in 4 people will experience a mental health problem this year yet the shame and silence can be as bad as the mental health problem itself. Your attitude to mental health could change someone's life.



## MASSAGE AND NAILS

### **Massage: VTCT Level 3 Diploma in Massage Therapies (UCAS PASS= 24 points)**

Gives them competency to massage and allows them to gain insurance, supports them for university if they are thinking of physio therapy. On some occasion's practical might be longer than an hour so expect to run over on a Wednesday for full body massage. All are welcome to attend the late night on a rota basis with hair and beauty students. **Mandatory units are:** *Health and safety, Client care and communication in beauty related industries, Provide body massage* **Optional units:** *Provide massage using pre-blended aromatherapy oils, Provide Indian head massage, Origins of massage.* UCAS points are subject to university/ course.

### **Nails: VTCT Level 3 NVQ Diploma in Nail Services (UCAS PASS= 32 points)**

Gives them competency to work as a nail technician and allows them to gain insurance. Theory will be completed by open learning they will have 2 mini multiply choice exams. On some occasion's practical might be longer than an hour so expect to run over on a Wednesday. All are welcome to attend the late night on a rota basis with hair and beauty students. Units are: Health and safety, Client care and communication, Apply and maintain nail enhancements, Airbrush design, Nail art, Electric filing, Promote and sell products and services, Effective running of a business and Working with colleagues. UCAS points are subject to university/ course.

## Gracjan Golec: Head Student

*"As a student that has come to NPA since Year 7, I feel as though I've become more integrated with the school, especially through my Sixth Form journey. I am studying Maths, Further Maths, Economics and Chemistry, which I have been able to succeed in as a result of the independence that comes with moving into upper school, as well as the great support I've received from the Sixth Form team, my teachers and my friends. The working environment that has been established here over the past few years is something that really stands out to me, which I know will help me achieve the results I require for university. Additionally, the extracurriculars and supercurriculars on offer here have motivated me to develop my character and explore my passions while adjusting to early adulthood. Our school continues to evolve every day with inputs from the student body, represented by us as Head Students, ensuring a welcoming and versatile space that adapts to the needs of every single student. I place my trust in NPA to help me fulfill my potential and prepare me for my future, as should you."*



## ENRICHMENT CLUBS

Students can lead or participate in a range of clubs in lunchtimes or after school to improve their leadership skills or sporting abilities. Examples of this year's clubs include the debate club, Henna club, the LGBTQ+ club, cards club, football, rugby & netball.

### **Library, Class and Student Support:**

All students have the opportunity to support younger learners in a teaching assistant role or during session 6, which is a great experience for someone who may be interested in a career in education.

### **Fitness/Sport:**

Gym or Sport sessions with guidance and support on fitness training where required.

### **Open Learn:**

Students in need of academic enrichment, especially for university, are able to engage in additional online courses to enhance their knowledge & skills.



## SPORT LEADERS

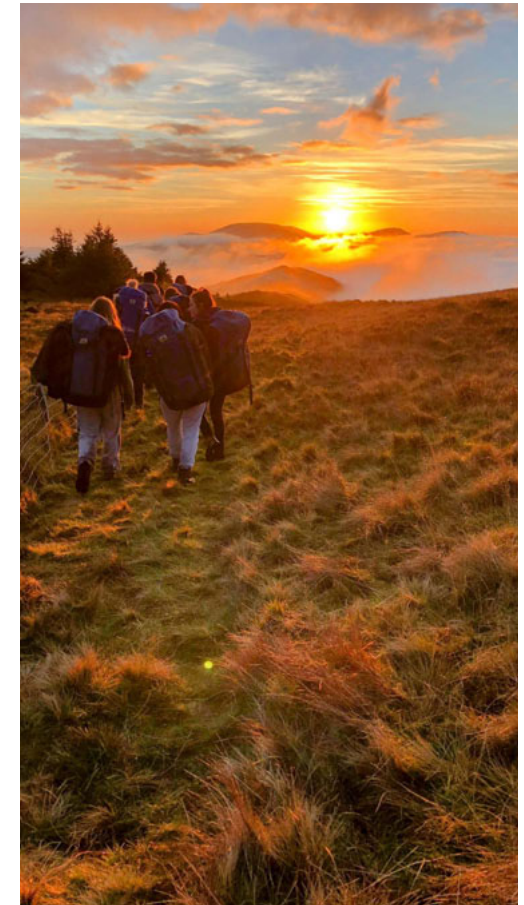
Level 3 Qualification in Sport Leadership (SLQ, UCAS PASS= 16 points)  
With Sports Leadership, we have the chance to use sports and physical activity as a way of supporting learners to develop the essential skills they need to plan, develop and deliver activities that bring these benefits to their communities. The Level 3 Qualification in Sports Leadership offers a blend of theory and practical experience, giving learners multiple opportunities to put into practice the leadership skills they develop as part of the programme. UCAS points are subject to university/ course.



## DUKE OF EDINBURGH

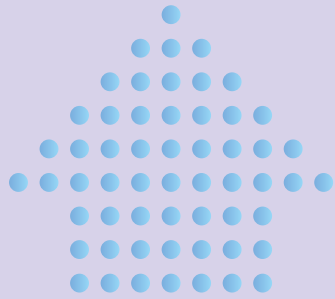
### **Duke of Edinburgh Award:**

Duke of Edinburgh Silver/ Gold Award; an adventure involving volunteering, physical skills, expedition activities and a residential course. Great for building confidence, skills and life experiences.



# Results and Destinations of Our Students

We are exceptionally proud of each and every student who leaves Nene Park Academy Sixth Form.

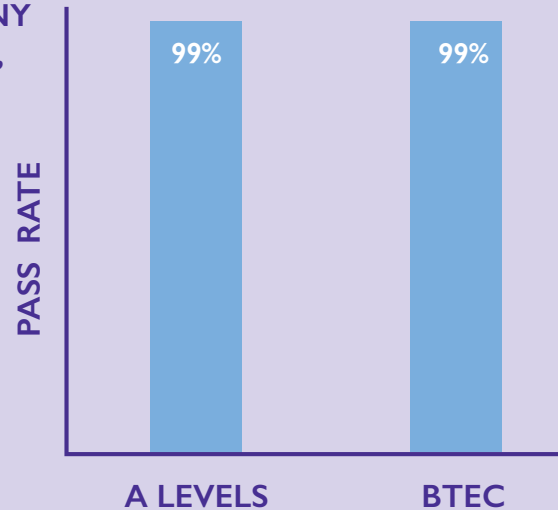


THREE YEAR AVERAGE ACHIEVEMENT, OVER THE LAST THREE YEARS THE AVERAGE ACHIEVEMENT FOR STUDENTS AT NENE PARK ACADEMY IS A-LEVEL 96% AND BTEC 99%



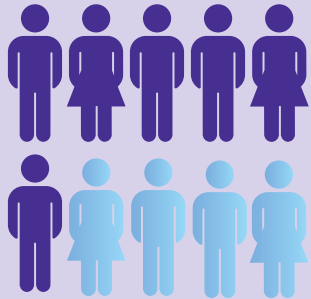
IN 2025 OUR STUDENTS WENT ON TO STUDY AT MANY PLACES INCLUDING THE FOLLOWING INSTITUTIONS, COURSES OR CAREERS:

- University of Durham to read Maths
- University of Cambridge to read Law
- University of Nottingham to read Veterinary Medicine and Surgery
- University of Warwick to read Economics
- University of Hertfordshire to read Architecture
- Anglia Ruskin University to read Primary Teaching with QTS
- A Financial apprenticeship with Deloitte
- A football coaching apprenticeship with Peterborough United FC



TOP TEN UNIVERSITIES OR CHOICE FOR OUR STUDENTS

University	Numbers
Nottingham	8
Nottingham Trent	8
Lincoln	6
Anglia Ruskin	6
Leicester	6
Northampton	3
York	3
Leeds	3
Leeds Beckett	3
Kings College	2



IN 2025 92% OF STUDENTS WHO APPLIED TO UNIVERSITY WERE PLACED. (84/91). THE OTHER 7 HAD PLACES BUT CHOSE TO ENTER APPRENTICESHIPS OR EMPLOYMENT. IN ADDITION 4 STUDENTS HAVE SECURED FOOTBALL SCHOLARSHIP PLACES AT UNIVERSITIES IN USA. 30% OF OUR STUDENTS GAINING PLACES AT RUSSELL GROUP UNIVERSITIES.

The logos are examples of student destinations and are not an endorsement, or in partnership with our Sixth Form, with the exception of PUF.C.



# Student Experience

**Aimee Fawcett:**  
Head Student

*"I joined Nene Park Academy in Year 7 and am currently studying A-level History, A-level English Literature and A-level Sociology. The Sixth Form has given me many opportunities to grow academically and personally through leadership roles and enrichment activities. Life changes a lot in Sixth Form as you balance studies with part-time jobs and university applications, but the staff are always approachable and supportive. Being part of the leadership team has been rewarding, and I have enjoyed taking part in school events and helping to create a positive and inclusive environment."*



## HOW TO APPLY TO NENE PARK ACADEMY



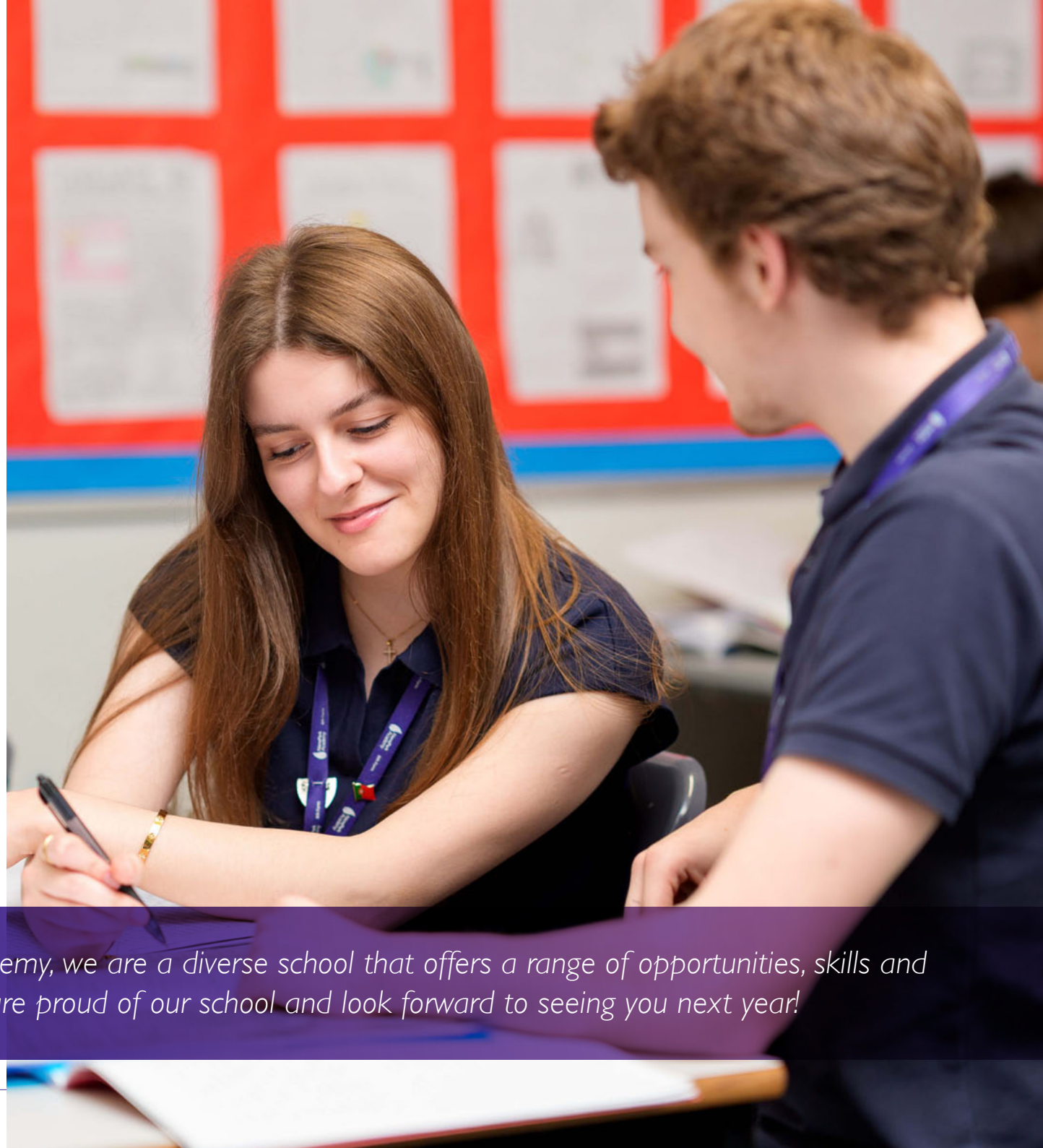
All Applications to Nene Park Academy Sixth Form should be made at [www.neneparkacademy.org](http://www.neneparkacademy.org). Use the link below for Sixth Form Applications.

**[www.neneparkacademy.org](http://www.neneparkacademy.org)**

Remember that when you fill out the application, we will check any predicted grades so please ensure that these are accurate.

If you require a paper application form these can be requested from the contact below. All students, whether internal or external applicants, will be offered a guidance meeting prior to an offer being made.

**Dr Matthew Thorne** (Head of Sixth Form)  
[mthorne@neneparkacademy.org](mailto:mthorne@neneparkacademy.org)  
01733 368319



*“Welcome to Nene Park Academy, we are a diverse school that offers a range of opportunities, skills and facilities whilst you are here! We are proud of our school and look forward to seeing you next year!”*



Hair and Beauty students get to work in a fully functioning salon with real clients. This helps to build their confidence and experiences.

# Hair and Beauty

**For students joining us and where hair and beauty is their chosen career route, we can offer:**

- Smaller classes with subject specialists teachers
- All the courses we offer ensure students are fully qualified and employable
- All courses hold UCAS points if students wish to go to university

**Students are given the opportunity to study 3 of the areas below:**

Combined level 2 and 3 hairdressing

- Level 2 Diploma for beautician
- Level 3 Diploma beauty make-up
- Level 3 Diploma theatrical and media make-up
- Level 3 Diploma nail technology
- Diploma level 3 massage therapies



# Peterborough United Scholarship

The Peterborough United Scholarship combines football with a BTEC Level 3 in Sport or A-Levels. The fixtures are played against both Premier League and Football League clubs with similar programmes, they are held at fantastic venues such as first team training grounds or even St Georges Park! This is a unique part of the course.

The Scholarship timetable includes Football training, gym sessions and HUDL match analysis sessions alongside your BTEC or A-Level lessons. In addition to these regular sessions, both Boys and Girls have team bonding sessions throughout the season, such as attending first team fixtures, stadium tours and footgolf.

## Jesse Abrantes: Scholarship Vice Captain

*So far my experience with the Peterborough United Scholarship has been nothing but amazing. From just the couple of months that I've been here, I've had great experiences with both coaches and players and have become a better player than when I originally joined. I'm looking forward to the next two years and everything that's in store for this great team."*

## Archie Waterland: Boys Captain

*"Throughout my time at the scholarship, I have learnt many vital skills that I can, not only apply to football but also to everyday life. I have improved as a player and as a person through the full time coaching, personal improvement tutor groups and the close nature of the team. My favourite experience during my time at the scholarship is winning away at Plymouth."*



To get involved or to find out more about our Scholarship Programme, please email:

[bruno.porfirio@theposh.com](mailto:bruno.porfirio@theposh.com) for the boys team and [estelle.handy@theposh.com](mailto:estelle.handy@theposh.com) for the girls team.





**Molly Cunningham:** *Scholarship Player and Peterborough United Foundation Coach*

*The scholarship has provided me with so many unforgettable memories and experiences as well as giving me the opportunity to complete my Level 1 in Coaching Football qualification and coach alongside full-time coaches on a Monday evening.*

*The scholarship is a close-knit community that will provide you with memories for life. My favourite memory has to be doing the double against all odds and going on stadium tours at Everton and Manchester City.*



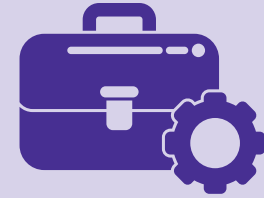
# Careers

We pride ourselves with offering high quality careers support to our students throughout their time in Sixth Form. Nene Park Academy are lucky to have a highly qualified career lead in Mrs Barkney who is available for appointments to discuss future progression plan. Mrs Long is our dedicated UCAS link and Dr Thorne has over 20 years of experience in supporting students to make highly competitive university applications. Support is available through a number of different channels and is focused to your planned destination.



**For those students who are planning to apply to university we have a wide variety of support available to you:**

- Personal Development sessions on Personal Statement writing and UCAS applications.
- Unifrog sessions, once every two weeks.
- Tailored talks from Nene Park Academy alumni about University applications.
- Trips to Bedford and Cambridge.
- Academic mentoring to include personal statement writing support. Including drafts and feedback.
- Small group and workshop sessions for students applying to certain courses or certain institutions.
- Support from Zero Gravity, Sutton Trust and specific University taster sessions to help students make informed choices.
- Experienced staff to guide you through the process as smoothly as possible.
- School Careers Fair.



**If you are interested in apprenticeships or employment after Sixth Form we offer the following support:**

- Personal Development sessions on Cover Letter writing and Apprenticeship applications
- Unifrog sessions, once every two weeks
- Visits from Apprenticeship providers at local Universities
- Academic mentoring to include cover letter writing support. Including drafts and feedback.
- Talks from Anglia Ruskin University about degree apprenticeships.
- School Careers Fair





Sixth Form  
in pictures





## Nene Park Academy

Oundle Road  
Peterborough  
PE2 7EA


T: 01733 368300

E: enquiries@neneparkacademy.org



[www.neneparkacademy.org](http://www.neneparkacademy.org)

 LIKE US ON FACEBOOK

 FOLLOW US ON X: @NeneParkAcademy

 FOLLOW US ON INSTAGRAM: @NeneParkAcademy



*High quality education at the heart of the community*