



Unlocking each child's  
superpowers



# Welcome to The Link

We are delighted that you are considering The Link for the education of your child.

The Link is a brand new 40-place Specialist Provision situated within the grounds of Swavesey Village College (SVC). The provision will be delivered by an experienced educational team of professionals from Martin Bacon Academy (MBA), a special school, based at the site of the nearby Northstowe Learning Community.

The LINK will offer 8 places in each year group (7 to 11). Pupils have access to mainstream education for 40% or more of their learning opportunities and will have significant support to ensure that this is successful.

They will also be able to select option subjects alongside their mainstream peers and will be fully supported by specialist trained staff who are employed by MBA.

Any additional Specialist provision, for example Hydrotherapy or Rebound Therapy, will be delivered at MBA.

The LINK's overall aim is to ensure that, when appropriate, young people have the opportunity to be successfully reintegrated to mainstream provision within their local community.

We hope that you find the contents of this prospectus useful and that it provides you with some of the information you need to assist you in identifying if we are a suitable provision for your child.



# Our Vision and Values

At The Link, we provide a nurturing and inclusive learning environment where every student feels valued, supported, and inspired to reach their full potential. Our holistic approach fosters confidence, skills, and a clear path to a brighter future. We put students at the heart of everything we do, ensuring learning starts from where they are and celebrating their superpowers.



## ACHIEVEMENT FOR ALL



We are committed to the individual achievement of every student and recognise the flexibility and rigor – in terms of the curriculum, support, resources and monitoring required to make this happen.

## A HIGH-QUALITY LEARNING ENVIRONMENT



We recognize the importance of a supportive learning environment. Committed to maintaining The Link's state-of-the-art facilities, we provide engaging, varied classroom experiences that motivate students. Beyond the classroom, we ensure a safe, happy space where students feel inspired and supported to learn.

## EXTENDING THE BOUNDARIES OF LEARNING



We understand that learning does not just take place in the classroom. We want to challenge our students to try new things and experiences, to help them find what skills and interests they have.

## VALUE OUR PEOPLE



We will be uncompromising in our commitment to know and value every Pupil and support them to achieve in the widest sense. This commitment underpins all aspects of all we will do.

## PURSUIT OF EXCELLENCE



We will promote a 'can-do' attitude, fostering continuous improvement and encouraging students to become as independent as possible. The Link will systematically compare its practices with top-performing schools to inspire ambition, enhance organization, and drive ongoing improvement.





# Our Curriculum My Journey

At The Martin Bacon Academy, children and young people (pupils) will be placed at the centre of all we do. This is built around a core offer based on our four pathways to success and the adaptations required to ensure a personalised curriculum.

The ethos of our Academy; 'Be Kind, Be Curious, Be Hardworking', underpins our expectation that we identify, develop and celebrate every individual's qualities, making sure that we plan from where the learner is.

An Individuals curriculum, known as 'My Journey', will be delivered through our pathways approach and centre on what we know about them, what they want and need, and the knowledge, visions and priorities of parents, carers and other professionals.

Being in a unique situation as a new specialist provision, and sharing a site with a mainstream school, we pride ourselves in being able to offer pupils a coherent curriculum which meets their diverse individual needs; academic, emotional, social, communicational, interactional and physical. This may include aspects of work across both schools, allowing all young people to draw from and contribute to the wider learning of all students and staff.

## My Future

This integrated curriculum approach will enable pupils to develop the skills or knowledge they require to enjoy the best possible outcomes. Pupils will be effectively prepared for an adult life where they can be happy, communicate as well as they can, and be as independent as possible.

## My Community

Pupils who attend MBA will be encouraged to be members of the Academy, a member of the wider community, and to contribute to the wider learning of all students and staff. It is our intention to involve pupils in wider community events and enhance their opportunities.

## My Outcomes

At MBA we will develop and celebrate each individual's qualities. We make sure we plan from where the learner is, knowing that if we look & listen carefully enough, they will show us. This information, alongside EHC plans, will inform outcome setting.

## My Family

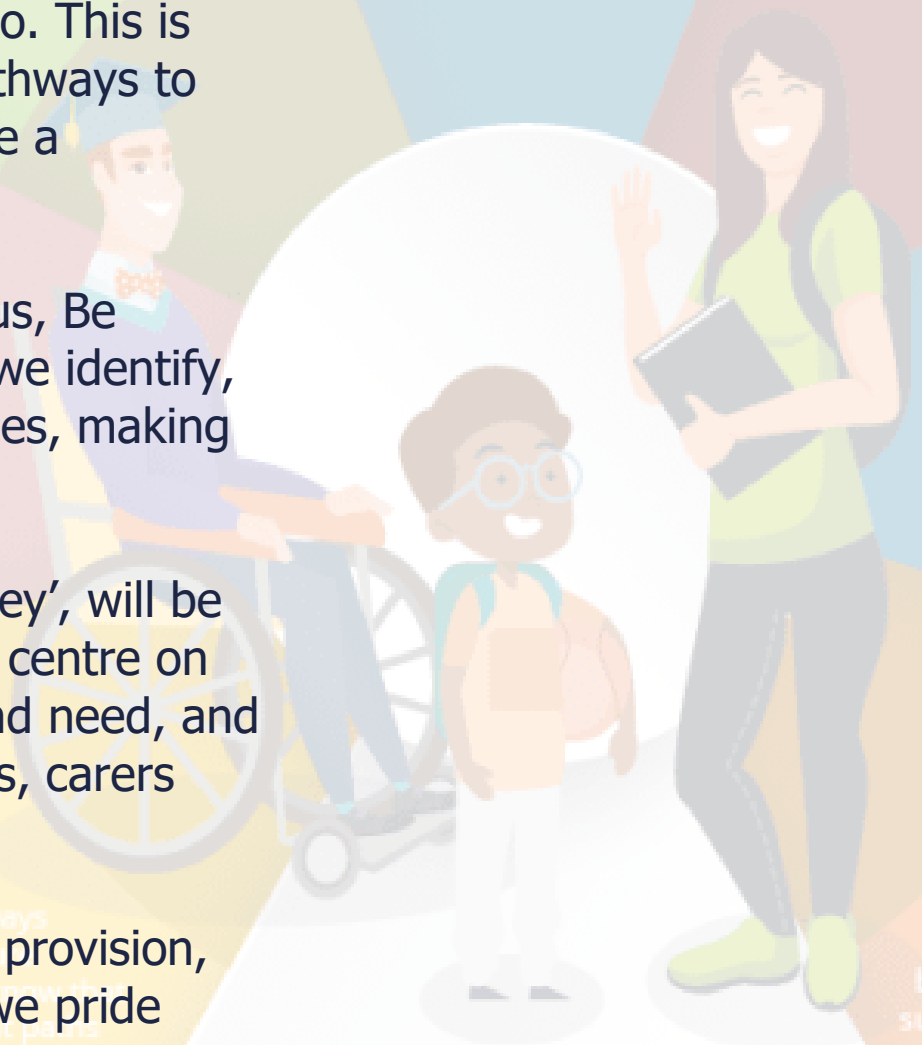
At MBA we know that working with families as partners is key. Each individual's curriculum will be based on what we know about them, what they want and need, and the knowledge, visions and priorities of parents and carers. We also recognise that sibling relationships are very important and value these as well.

## My Pledge

Underpinning this integrated curriculum approach are our Trust Pledges and the '99 things to do before I'm 15¾'. These programmes support a balanced range of stimulating contexts for learning through different experiences, themes and settings.

## My Progress

We track progress in different ways



**MY JOURNEY:**  
a holistic, integrated curriculum approach

# Our curriculum - Pioneer pathway

Learners will follow the National Curriculum, building on from the knowledge, skills and understanding previously experienced across learning opportunities. Learners access subject specific learning.

Our formal curriculum is delivered primarily through structured learning activities that are both fun and engaging taught by subject specialists from Martin Bacon Academy and Swavesey Village College.

Learners will achieve qualifications and accreditations that will support them to move onto college, apprenticeships or employment.

Core subjects and the tutor programme will be delivered by MBA staff in The Link and foundation subjects delivered by Swavesey Village College staff within the mainstream school.

Pioneer learners will have PLG outcomes linked to their EHCP, which will be supported by access to a broad and balanced curriculum.

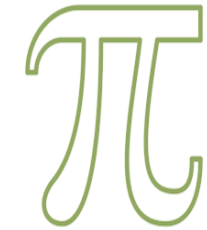
# KS3

Core  
@ The Link

Foundation subjects  
@ Swavesey Village College



English



Maths



Science



PLG



Learning for  
Life



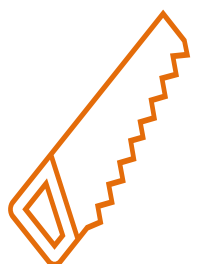
Languages



Drama



Art



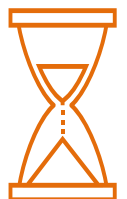
DT



PE



Computing



History



Music



Dance



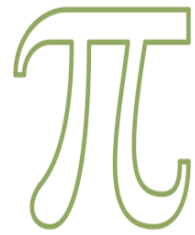
Geography



Ethics



English



Maths



Science



PLG



Learning for Life



PE

Compulsory

# KS4

All students in KS4 work towards external examinations and accreditations across a range of subjects.

Students in Years 9 to 11 have some degree of choice but all students will study:

English

Mathematics

Science

Physical Education

Learning for Life

Employability

There will also be a number of guided choices designed to give a good range of choices and sound careers and further education progression. Students can choose from subjects such as:

Humanities (History, Geography)

Creative & Performing Arts (Art, Drama, Media Studies, Music)

Humanities (Business Studies, Religious Education, Child Development, Health and Social Care)

Physical Education

Modern Foreign Languages (French or Spanish) . .

Design and Technology (Product Design or Fashion and Textiles)

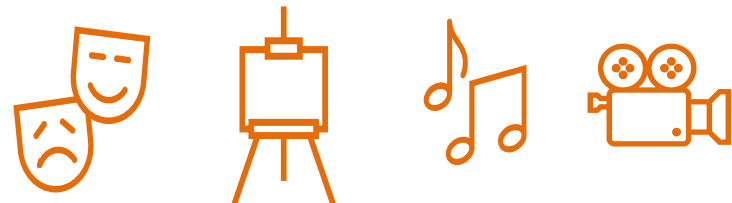
Computer Science

Sport

Hospitality and Catering

Hair and Beauty

Guided Choices



Creative & Performing Arts



Humanities



Languages

Computer Science

Design & Technology



PE & Sport

Hair & Beauty

Hospitality & Catering

# Admissions

The Link offers the opportunity to access a mainstream and specialist setting.

## Profile of need

Students will meet our profile of need, in addition to an observation of them within their educational setting, to confirm we are the most suitable provision. Profile of need:

- An Education, Health and Care Plan
- Student's working a maximum of no more than 3 years behind their chronological age
- Primary needs in Cognition and Learning and/or Communication & Interaction.
- Will access a minimum of 40% in the mainstream with the rest of their time spent within The Link.

## Open Events

We understand how important it is for families to see the environment in which their child will access their education.

We have the opportunity for prospective families to tour the school and meet the team, at one of our three open events held throughout the academic year.

An expression of interest can be submitted via the QR code. A member of the team, will then advise of the next available tour and invite you to our open event.

Communication regarding the event, will be communicated 4 weeks in advance of the date, as to whether or not you would still like to attend.

## How to apply

Families who would like to apply for The Link, will need to request a consultation by their caseworker.

This would typically be through the phase transfer annual review, requesting The Link to be named.

On receipt of a consult, we will review the paperwork submitted and establish if we would be a suitable placement.

If we feel that we could meet your child's educational needs, we will contact your child's primary setting to organise an observation. We will request the primary setting to inform you of this observation taking place.

Following observation, we will write to the LA to confirm if we are able to meet need or not.

If the LA agree to the placement, we will be named on your child's EHCP.

If you'd like to find out more about The Link before requesting a consultation to be sent, please get in touch with us: [thelinkoffice@martinbacon.academy](mailto:thelinkoffice@martinbacon.academy) – we'd be really happy to answer your questions.



*"The teachers and staff at the Link school provide unwavering support to parents through clear communication, proactive guidance and support and a deep respect for each family's and young person's journey through education."*

*Parent of current pupil*

# Extending the Boundaries to Learning

## PLEDGES

We all understand that learning does not just take place in the classroom. We want to challenge our students to try new things and experiences, to help them find what skills and interests they have.

### 99 Things

Our staff have produced the following list to challenge our students to experience a wider range of experiences.

How many of the activities on the list can you tick off and say that you have done?

## 99 THINGS TO DO BEFORE YOU'RE 15<sup>3</sup>/<sub>4</sub>



<ol style="list-style-type: none"> <li>1. Climb a tree</li> <li>2. Roll down a hill</li> <li>3. Skim a stone</li> <li>4. Go out in the rain</li> <li>5. Eat fruit/vegetables straight from a tree</li> <li>6. Catch a fish with a net</li> <li>7. Hunt for treasure on the beach</li> <li>8. Play conkers</li> <li>9. Feed an animal from your hand</li> <li>10. Have a sit-down meal (out)</li> <li>11. Open a bank account</li> <li>12. Go on a long bike ride</li> <li>13. Play in a competitive game of sport</li> <li>14. Perform in front of a crowd</li> <li>15. Play 3 different sports</li> <li>16. Go on the guided busway</li> <li>17. Check out crazy animals in a rock pool</li> <li>18. Go to the beach</li> <li>19. Try rock climbing</li> <li>20. Cook on a campfire</li> <li>21. Eat fish and chips by the sea</li> <li>22. Read and orientate a map</li> <li>23. Play in the snow</li> <li>24. Set up a snail race</li> <li>25. Play pool sticks</li> <li>26. Play in waves</li> <li>27. Make a trail with sticks</li> <li>28. Make a mud pie</li> <li>29. Dam a stream</li> <li>30. Light a fire without matches</li> <li>31. Listen to classical music</li> <li>32. Visit a museum</li> <li>33. Watch a film at a cinema</li> </ol>	<ol style="list-style-type: none"> <li>34. Watch a live performance</li> <li>35. Play an instrument</li> <li>36. Read a newspaper</li> <li>37. Watch the news</li> <li>38. Visit a Cambridge college</li> <li>39. Play beach games</li> <li>40. Visit a foreign country</li> <li>41. Go star gazing</li> <li>42. Take a photo of nature</li> <li>43. Hold a scary animal</li> <li>44. Visit a farm</li> <li>45. Explore in bare feet</li> <li>46. Hunt for fossils and bones</li> <li>47. Play a card game</li> <li>48. Play a game of tidily winks</li> <li>49. Listen to live music</li> <li>50. Know basic first aid</li> <li>51. Have your work displayed</li> <li>52. Wash up by hand</li> <li>53. Sing around a campfire</li> <li>54. Go tobogganing</li> <li>55. Send a letter in a post-box</li> <li>56. Put up a tent</li> <li>57. Plant it, grow it, eat it</li> <li>58. Wander through the woods</li> <li>59. Camp out at night</li> <li>60. Bury someone in the sand</li> <li>61. Hunt for bugs</li> <li>62. Find some frogspawn</li> <li>63. Catch a falling leaf</li> <li>64. Track wild animals</li> <li>65. Catch a crab/sea star</li> <li>66. Experience nature at night</li> </ol>	<ol style="list-style-type: none"> <li>67. Identify 5 different trees</li> <li>68. Identify 5 different birds</li> <li>69. Collect shells</li> <li>70. Lead an activity</li> <li>71. Play a boardgame</li> <li>72. Call an owl</li> <li>73. Fly a kite</li> <li>74. Canoeing</li> <li>75. Cook a meal</li> <li>76. Wash a car</li> <li>77. Go bird watching</li> <li>78. Go punting</li> <li>79. Visit a zoo</li> <li>80. Go geocaching</li> <li>81. Visit an arcade</li> <li>82. Build a raft</li> <li>83. Bake a cake</li> <li>84. Build a sandcastle</li> <li>85. Climb a hill</li> <li>86. Make origami</li> <li>87. Build a den</li> <li>88. Make a daisy chain</li> <li>89. Create some wall art</li> <li>90. Paint with hands and feet</li> <li>91. Make something from clay</li> <li>92. Draw a sculpture</li> <li>93. Build a rocket</li> <li>94. Design and make something</li> <li>95. Make a grass trumpet</li> <li>96. Make a home for a wild animal</li> <li>97. Make your own lunch</li> <li>98. Make a cup of tea</li> <li>99. Watch a show in a theatre</li> </ol>
---	--	---





Participation



Leadership



Excellence



Diversity



Giving



ENVIRONMENT



SERVICE

In all Meridian Trust schools the trust has developed and invested in a simple but broad set of Academy PLEDGES that students are expected to complete during the course of their time at the academy.

At The Link our Pledges are tailored to each pupil's interests. Pupils who have siblings who attend another Meridian Trust school will be able to share their pledges success in the same way with equal reward.

PLEDGES is an awards system which offers students a range of opportunities that enhance their learning and development. It is an expectation of every pupil to complete their PLEDGES during their time at The Link.

The PLEDGES system aims to encourage and support many important qualities in students, such as responsibility, leadership, and citizenship, all of which are crucial for ensuring pupils are ready for the next stage in their education, training or employment and have brighter futures.

# Care, Guidance and Support

Learners will follow the National Curriculum, building on from the knowledge, skills and understanding previously experienced across learning opportunities. Learners access subject specific learning.

## Every child is known, valued and supported

Our student-centered approach through our 'My Journey' curriculum; ensures all staff know the student's they work with extremely well, and we allow staff to dedicate additional time to building relationships founded on trust and support.

## Daily tutor time

A dedicated Link tutor team will meet with their tutor group every day. The sessions are used as opportunities to check in with individual; assist concerns or worries; help with organizational support, provide time to chat with peers and a trusted adult.

## Experienced staff team

MBA's exceptional pastoral and safeguarding framework means we hold the systems, expertise and dedicated staff team to provide the foundation for the full range of pastoral support necessary to look after every young person at The Link.

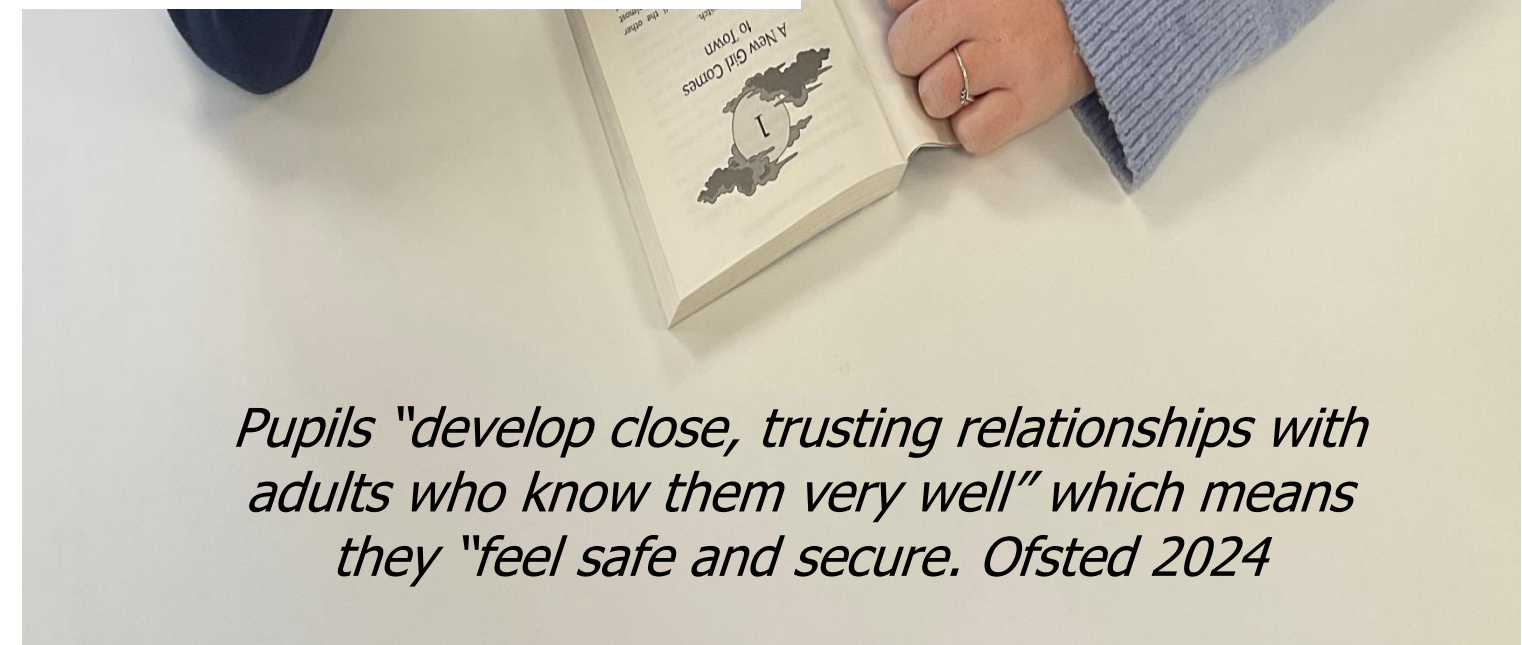
## Our multi-disciplinary Team

Looking after student wellbeing is our number one priority: our MDT comprises of a range of staff with specialisms in pastoral care, who oversee our internal and external wellbeing support. Support also extends to families, with support accessing specialist services.



## Therapeutic Thinking

We have a therapeutic approach to understanding the behaviour of our pupils and understand that all behaviour is a communication. Our approach is centred around what we do for the young pupil, not what we do to them and we do our best to give them the tools to succeed.



*Pupils "develop close, trusting relationships with adults who know them very well" which means they "feel safe and secure. Ofsted 2024*

# Valuing People

## Sense of identity

Our House system is at the heart of our commitment to ensure that 'Every child is known, valued and supported'. This system ensures that parents and families feel supported through every stage of their child's education.

### The House System

The Link will be organised into four 'Houses' each of which will consist of 10 students and 3 – 4 staff. Each house has a distinct identity but applies common structures and systems.

In September 2025 we will have two Houses: the name & logo to be determined by our students



### Be Kind

### Be Curious

### Be Hardworking

Our School Values of being Kind, Curious and Hardworking provide the pillars that our community is built around, and help us work towards achieving the vision we have for our students.

## Vertical Tutoring

The mixed aged tutor group system is known as Vertical Tutoring. Each tutor group will have a mixture of students from Years 7-11. The Vertical Tutoring system has many benefits, fostering a family spirit where older students offer guidance and provide support to younger students. It also ensures students have a sense of the whole school picture as the younger students see the older ones preparing for work experience, subject choices and important examinations.

The tutors will follow the students from their first few days to their last at The Link. This allows them to easily build great relationships

with students and their families and ensure they receive the support they need. Each tutor will make regular contact with a child's family in the year to discuss progress and address any concerns.

An encouraging House ethos for students to strive in is developed and strengthened by healthy competition. Students will have the opportunity to compete alongside their House peers in a variety of activities in order to claim victory and win the prestigious House Cup.

# Working in Partnership

**We understand the importance of working in partnership with families, external professionals and any other appropriate services to ensure the best outcomes for pupils.**

## Families

At The Link, we believe that working in partnership with families is key to helping every child reach their full potential. We value open communication and collaboration, ensuring that parents and carers are actively involved in their child's learning journey.

By working together, we can better understand each child's strengths, needs, and goals, creating a consistent and supportive environment both at home and in school.

We regularly share progress, provide resources, and welcome input from families, making sure that every child has the best possible opportunities to succeed.

## Martin Bacon Academy

We work closely with Martin Bacon Academy to support pupils at The Link. Through this collaboration, we can access specialist intervention spaces such as hydrotherapy and work with the MDT team, providing pupils with resources and support beyond the ordinary curriculum. This partnership ensures a tailored, enriching education that promotes independence, confidence, and success.

## Swavesey Village College

We are proud to partner with Swavesey Village College to support our pupils access a bespoke curriculum. Judged to be Outstanding by Ofsted in June 2024, and as a school community they are committed to take Swavesey Village College 'beyond outstanding' to ensure it delivers a rich and vibrant education experience for all of their students.



*The school has also replicated its approach in a small, specialist provision at a local secondary school within the same trust. This fosters a strong working relationship between the secondary and the special school and provides valuable support to the pupils who attend.*

*Ofsted 2024.*



## Get in touch

The Link,  
Gibraltar Lane, Swavesey, CB24 4RS

 01223 340800

 [thelinkoffice@martinbacon.academy](mailto:thelinkoffice@martinbacon.academy)

 [www.martinbacon.academy](http://www.martinbacon.academy)