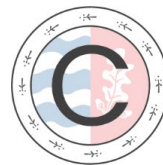


Welcome to Year 11 Information Evening **Class of 2026**

2nd October 2025



Community



Aspiration



Respect



Excellence



The Pursuit of Excellence



Valuing People



Achievement For All



High-Quality Learning Environment



Extends the Boundaries of Learning

At Lincroft Academy, we



Community



Aspiration



Respect



Excellence



- What do you want from this year?
- Where will you be on this day next year?
- Who will be talking to you instead of me?





What will your GCSE envelope moment be like?

You make your moment – you decide – you have the power to make the choices for it to be incredible. Start now and don't stop.

The Class of 2023

Don't worry if you missed us on ITV news last night, here is a link to our students celebrating their fantastic results yesterday! [itv.com/news/anglia/20...](https://www.itv.com/news/anglia/2023-05-19/meridian-trust-academy-students-celebrate-a-massive-success) (2nd video down - ITV News Anglia West). Be quick! it's only available to watch until this evening! Thank you @itvanglia



The Class of 2024

- [Record-breaking GCSE results for students at Lincroft Academy \(bedfordtoday.co.uk\)](https://bedfordtoday.co.uk)

Bedford Today

Education

Record-breaking GCSE results for students at Lincroft Academy

By Clare Burnell

Contributor



Comment

Published 22nd Aug 2024, 14:38 BST



The Class of 2025



Education

Students at Lincroft Academy celebrate excellent GCSE results

By Rosie Sly Contributor



Published 21st Aug 2025, 14:11 BST | Updated 21st Aug 2025, 14:16 BST



Lincroft Academy GCSE results - Matthew Price

Lincroft Academy was filled with pride this morning as Year 11 students collected a fantastic set of GCSE results.

Across a wide range of subjects, many surpassed their target grades - an achievement that reflects not only their talent, but months of dedication and determination.



Students at Lincroft Academy celebrate excellent GCSE results

4.3 The link between absence and attainment at KS4

For pupils at the end of KS4 in 2022/23, as the 5% band of attendance during Year 11 increases the proportion of pupils achieving GCSE Maths and English Grade 5 increases as shown in Figure 6. Over the entire cohort, pupils with 95-100% attendance were 1.6 times more likely to achieve the expected outcome in reading, writing and maths than

23

pupils with 90-95% attendance and 2.4 times more likely than pupils with 85-90% attendance. Due to low numbers of pupils in the low attendance bandings they are aggregated into a single <50% attendance band for subsequent analysis.

The long-term impact on earnings

Missing school doesn't just affect exam results and a child's time in education – it can impact future earnings too.

Persistently absent pupils in secondary school could earn £10,000 less at age 28 compared to pupils with near-perfect attendance.

For each additional day of absence between Years 7 to 11, the typical pupil could miss out on an average of £750 in future lifetime earnings.

Attendance Band 2

95-100%	0.04	0.07	0.08	0.09	0.10	0.12	0.16	0.21	0.33	0.53	1
90-95%	0.08	0.13	0.15	0.17	0.19	0.22	0.31	0.40	0.62	1	1.9
85-90%	0.13	0.21	0.25	0.27	0.30	0.36	0.49	0.64	1	1.6	3.0
90-85%	0.20	0.33	0.39	0.43	0.47	0.56	0.77	1	1.6	2.5	4.8
80-85%	0.26	0.42	0.50	0.55	0.61	0.73	1	1.3	2.0	3.3	6.2
75-80%	0.36	0.58	0.69	0.76	0.84	1	1.4	1.8	2.8	4.5	8.5
65-70%	0.43	0.69	0.82	0.90	1	1.2	1.6	2.1	3.3	5.3	10.1
60-65%	0.48	0.76	0.91	1	1.1	1.3	1.8	2.6	3.7	5.9	11.2
55-60%	0.53	0.84	1	1.1	1.2	1.5	2.0	2.6	4.1	6.5	12.3
50-55%	0.63	1	1.2	1.3	1.5	1.7	2.4	3.1	4.8	7.7	14.7
50%	1	1.6	1.9	2.1	2.3	2.8	3.8	4.9	7.7	12.3	23.3
<50%	50-55%	55-60%	60-65%	65-70%	70-75%	75-80%	80-85%	85-90%	90-95%	95-100%	

Attendance Band 1

Department for Education

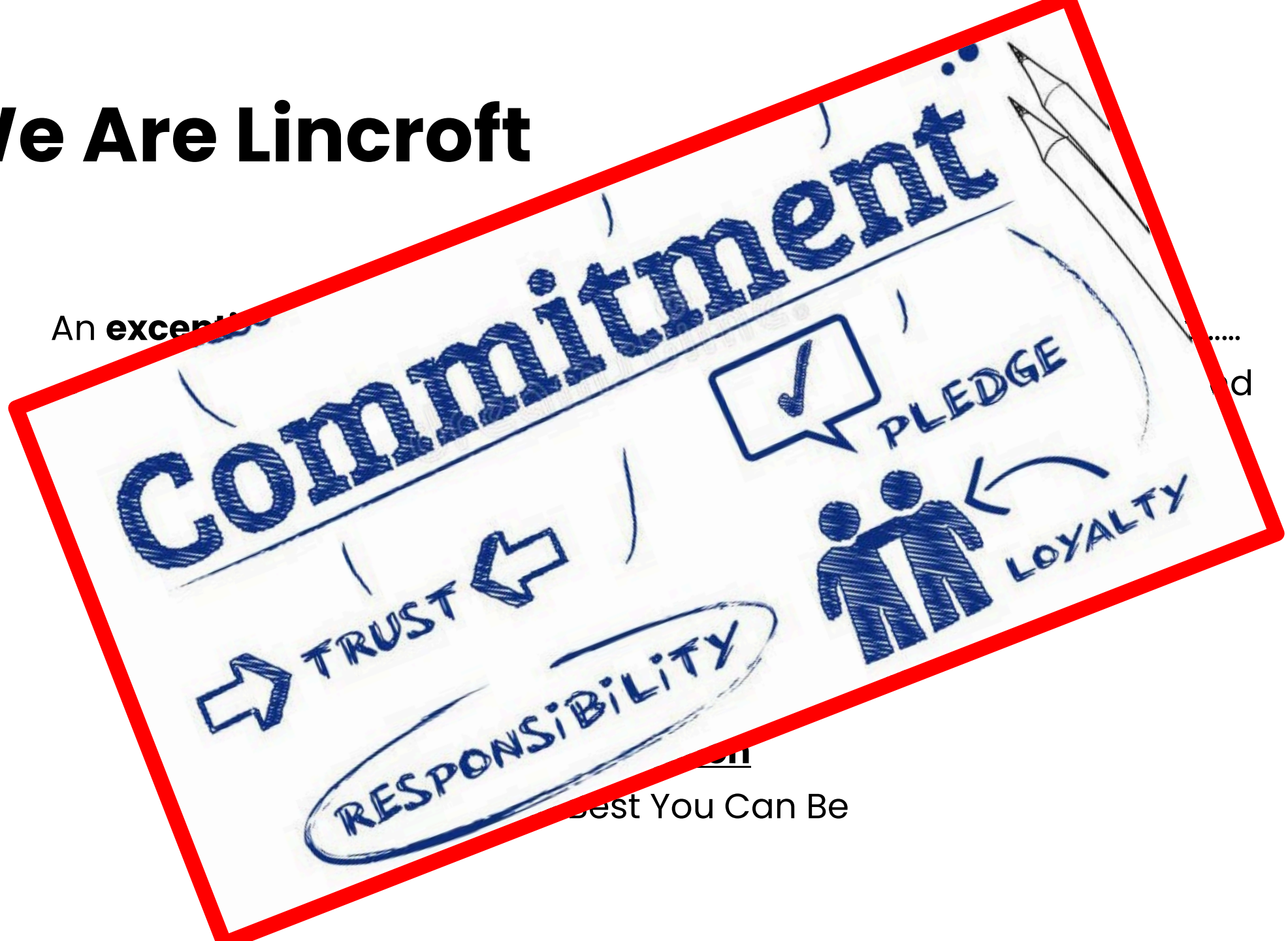
The link between attendance and attainment in an assessment year

Research Report
March 2025

Pupils who attend 95-100% of the time are 1.9x more likely to achieve Maths and English GCSE Grade 5 than pupils who attend 90-95% of the time. Pupils who attend 90-95% of the possible sessions are 1.6x more likely to achieve the outcome than pupils who attend 85-90% of the time

We Are Lincroft

An **excerpt**



Best You Can Be

Aims:



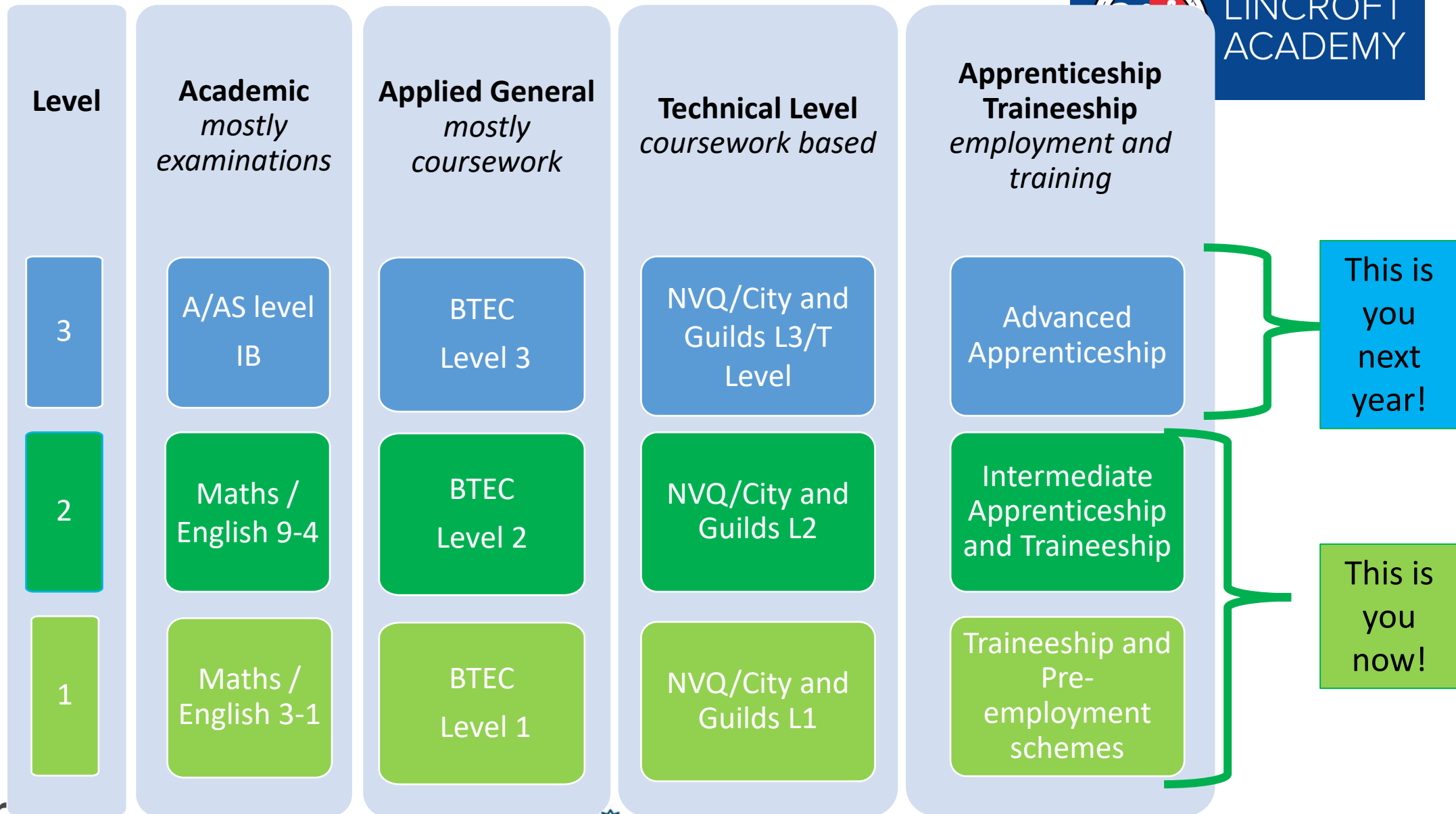
- Post-16 options: Life after Lincroft
- Key dates and events this year
- Preparing Year 11 for GCSEs & sharing progress with parents
- Revision resources and learning platforms
- How to best support your child's progress and wellbeing



What is available after GCSEs?



What is available



Option 1: Stay in full-time education

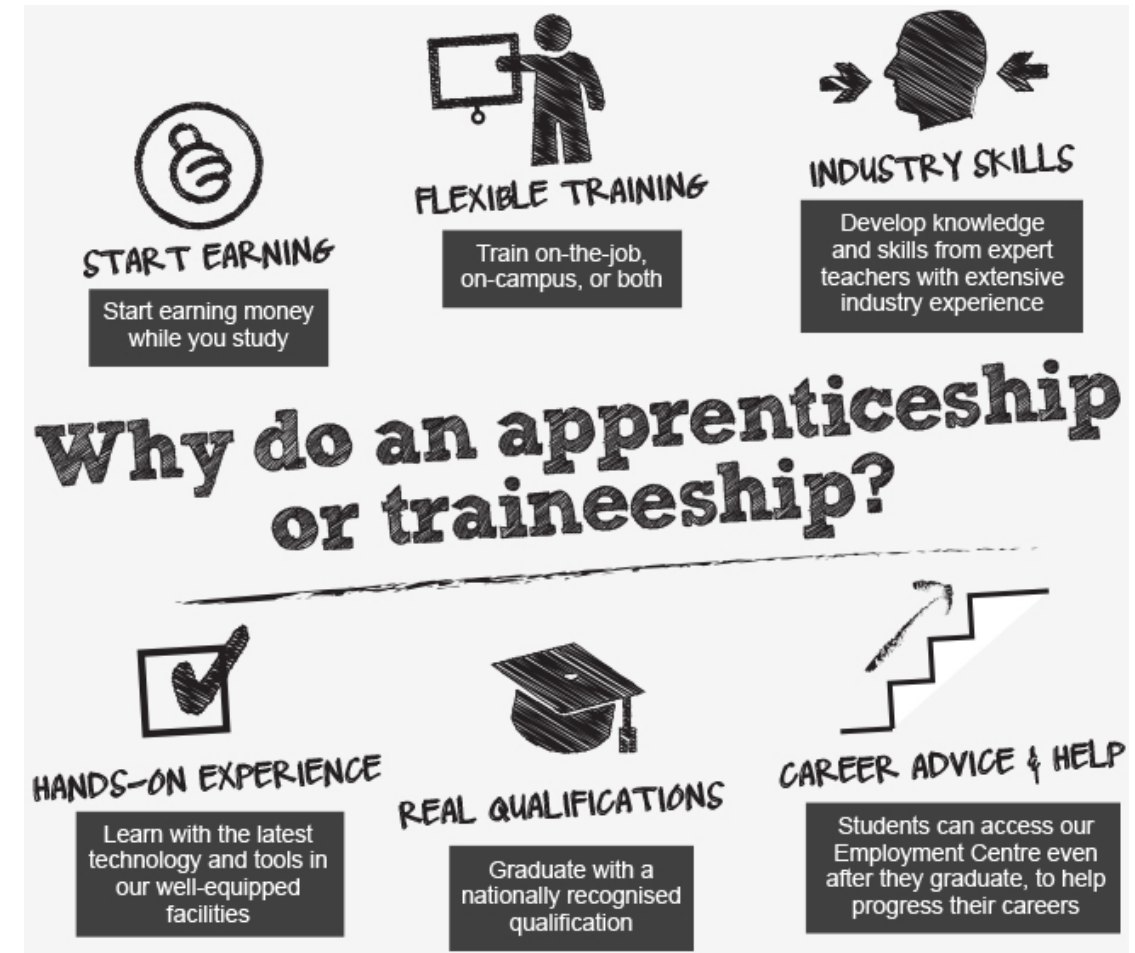


- You could take a range of subjects that lead to qualifications that keep your options open, like A levels.
- Courses like T Levels or BTEC allow you to focus on a chosen career area like construction, healthcare, science or digital careers.



Option 2: Combine work and study

- Gain practical skills, get work experience and a qualification that employers need.
 - 1. Traineeships
 - 2. Supported internships
 - 3. Apprenticeships



Sixth Form or College?



- What are the differences?



- Quality of teaching, support and facilities



- Choose what is right for you, not what your friends are doing!



- Location and transport



- Different expectations and culture of different providers



- Support to progress after finishing



Sixth Form



What?

Staying on at a school sixth form/sixth form college after Year 11 to study A Levels and /or Level 3 BTEC courses for 2 years.

Where?

Sharnbrook, Bedford Sixth Form, Kimberley College, another school sixth form or sixth form college.

What grades do I need?

At least 5 GCSEs at Grade 9 – 4 including English and Maths. Some subjects such as A Level Maths and Science have higher minimum grade requirements.

How to find out more

Sixth Form Open Evenings
Sixth Form prospectuses
Consider the opportunities 'facilitating subjects' bring (subjects valued by universities).



College



What?	You can go to college to study A Levels and /or Level 3 Vocational courses for 2 years (Engineering, Hairdressing, Health & Social Care and Construction. Courses are available from Entry Level to Level 3).
Where?	Local colleges are Bedford College, Shuttleworth College, Moulton College, Central Beds College, Milton Keynes College & SSG.
What grades do I need?	Entry Level – no specific grades. Level 1 – Normally 3 subjects at Grade 2 or above Level 2 – Normally 3 subjects at Grade 3 or above Level 3 – Normally 5 subjects at Grade 4 or above including English and also Maths for some courses.
How to find out more	Attend college open days/ taster days College prospectuses Look on college websites



Apprenticeship

What?

A full time paid job (£7.55p/h) with training. You learn work-based skills on the job and normally attend college for one day per week. Often leads to a permanent job.

Where?

Lots of employers in Bedford offer apprenticeships and training is normally provided by a local college.

What grades do I need?

This varies but, in most cases, employers ask for GCSE Maths & English at Grade 4 or above as a minimum. Competition for apprenticeships is fierce; the most important thing is determination and motivation.

How to find out more

Request a Careers Appointment
National Apprenticeships website – www.apprenticeships.org.uk
www.ratemyapprenticeship.co.uk



Top 10 skills of 2025



Qualifications
are not enough!

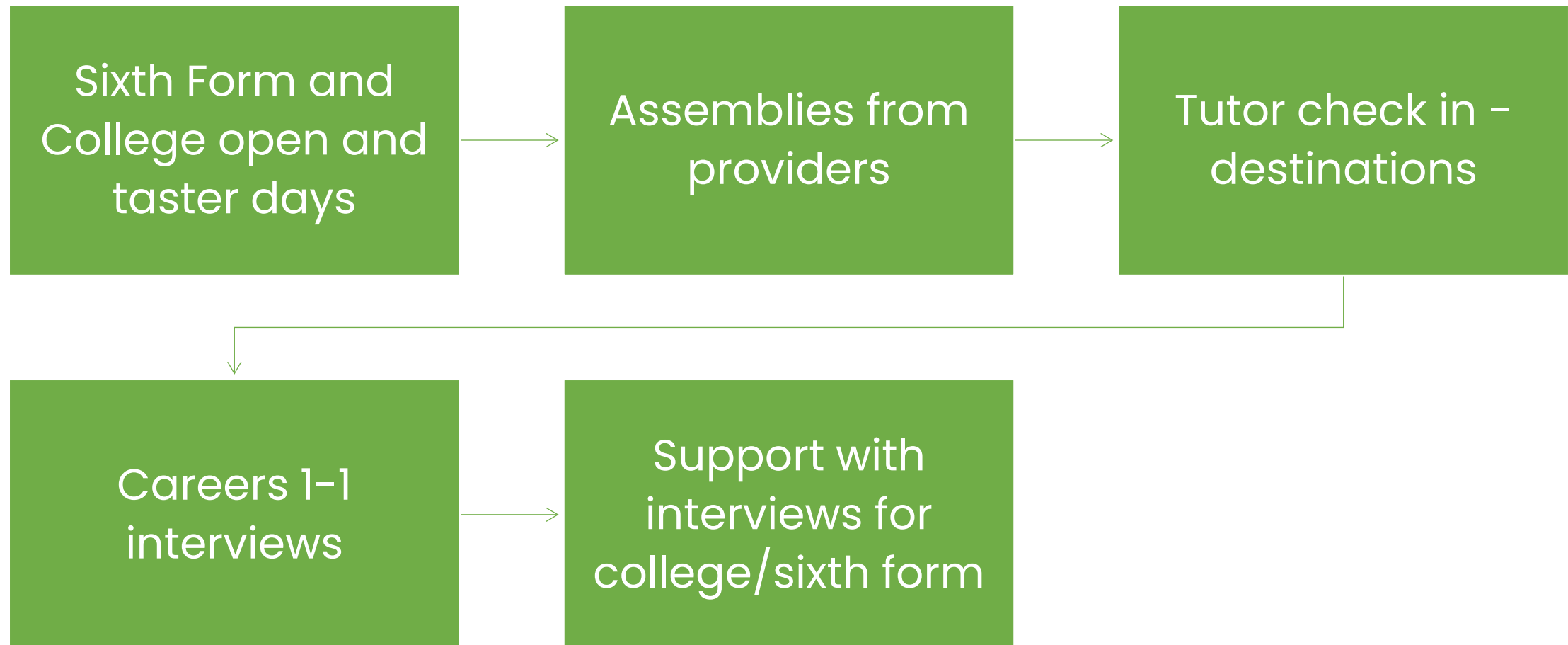
What if I'm not in education or training?



- NEET – not in education, employment, training
- Young people who were NEET remained disadvantaged in their level of educational attainment 10 and 20 years later
- NEET experiences are associated with a higher risk of poor physical and mental health after 10 and 20 years



How will we achieve this?



Sixth Forms/College Open Day Dates 2025



Bedford College	Sat 15 th Nov 10 – 1pm
Shuttleworth College	Sat 18 th Oct 9.30 – 12.30
Sharnbrook Sixth Form	Weds 5 th Nov (TBC)
Kimberley Sixth Form College	Tues 14 th Oct, Thurs 16 th Oct 5 – 730pm
Moulton College	Sat 11 th Oct, Sat 15 th Nov
Bedford Sixth Form	Sat 27 th Sep, Tues 21 st Oct
Samuel Whitbread	Thurs 13 th Nov 3.30 – 7pm

Please always check on the website as some require that you book a place. Dates and times may change.



Sixth Forms/College Assembly Dates 2025



Sharnbrook Sixth Form	6th October
Kimberley Sixth Form College	20th October
Bedford College Group	3rd November



Where else can parents look for careers and futures support?



About Meridian Pathways

Year 6-7

Year 8-9

Year 10-11

Year 12-13

Your child's future starts here

Meridian Career Pathways will give you everything you need to get inspired, spark conversations and support your child with planning their future career.



Year 6-7



Year 8-9



Year 10-11



Year 12-13



The Pursuit of Excellence



Valuing People



Achievement For All



High-Quality Learning Environment



Extends the Boundaries of Learning

<https://pathways.meridiantrust.co.uk/>

Summary

- Talk to advisors, teachers, family, and friends
- Visit Sixth Forms, Colleges, and Training Providers
- Apply to multiple options and keep a back-up plan
- Sixth Form deadlines: Oct/Nov (Colleges accept all year)
- Final decision made after results in August 2026



How are we helping students to prepare?



Year 11 Overview



Autumn Term

- Feedback from Year 10 Exams
- PR1 Reports home
- Intervention begins – afterschool revision
- NEA components in class
- Academic Mentoring
- Meet the tutor/Post16 fair
- Post16 Assemblies
- November Mock Exams: 10.11.25 to 21.11.25
- Mock Results Day
- PR2 Reports home

Spring Term

- Mock Feedback
- Academic Mentoring
- Parents Evening – 22.01.26
- Targeted revision/intervention
- NEA progress continues
- Lessons focused on revision
- March Mock Exams: 23.02.26 to 06.03.26
- Information evening
- Easter School: 30.03.26 to 03.04.26

Summer Term

- Feedback from your March Mock Exams
- TP3 Reports home
- Lessons focused on revision
- Academic Mentoring
- Targeted revision/intervention
- Exam support sessions
- GCSE exams: 7.05.26 to 26.06.26
- Prom



Mock Exam Timetable



	Monday 10th	Time	Tues 11th	Time	Wed 12th	Time	Thurs 13th	Time	Fri 14th	Time
AM	English Lang	09:00 - 10.45	Maths 1	9.00 - 10.30	Biology	9:00 - 10:15 or 10.45 am	History	09.00 - 10.45	MFL Listening/Reading	9.00 - 11.00
PM	Sociology	12.45 - 14.30	Computing/Media	13.00 - 14.30	Geography	13.00 - 14.30	PE1	13.00 - 14.15	Business	13.00 - 14.30
	Monday 17th	Time	Tues 18th	Time	Wed 19th	Time	Thurs 20th	Time	Fri 21st	Time
AM	English Lit	9.00 - 10.45	Physics	9.00 - 10.15 or 10.45	Food/RS/H&S	9.00 - 10.45	DT	09.00 - 11.00	Chemistry	9.00 - 10.15 OR 10.45
PM	Maths 2	13.00 - 14.30	Dance/Drama/Music	13.00 - 14.30	PE 2	13.00 - 14.30	Maths 3	13.00 - 14.30	MFL Writing	13.00 - 14.30

If you have access arrangements for upcoming exams, please speak to Mr Johnson to confirm what you are entitled to



After School Intervention Timetable (Invite Only)



	Monday	Wednesday	Thursday	Friday
Session 1 - 3:05 - 3:45	Spanish/German - ENU/BKU	Science - DGR	Art - KHU	PE - RED
	English - DDA	Maths - HBO	History - MDI	Computing - DDU
	Geography (Week B) - ACA	Geography (Week A) - HBA		
Session 2 - 3:45 - 4:30	Drama - PWI	Sociology - MAL	Food - HST	Media - PPE
	DT - ABR	Music - RRU	Business - EHO	



Marginal Gains – The 1% rule of improvement

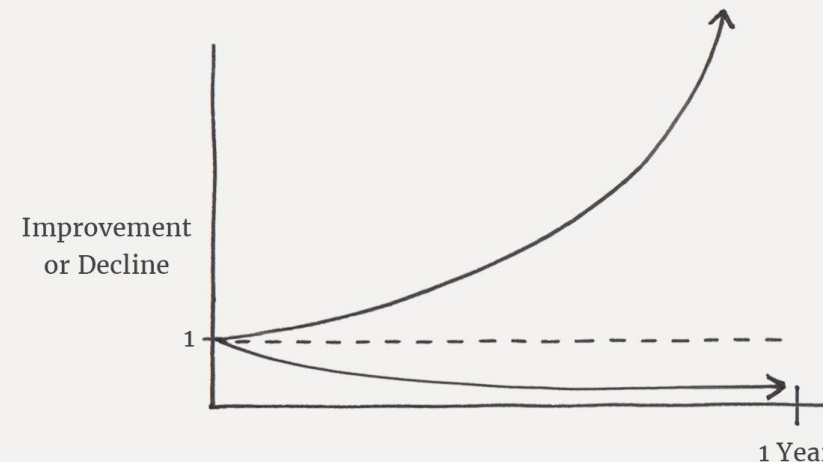


"The whole principle came from the idea that if you broke down everything you could think of that goes into riding a bike, and then improved it by 1%, you will get a significant increase when you put them all together"



The Power of Tiny Gains

$$\begin{aligned} \text{1\% better every day} & \quad 1.01^{365} = 37.78 \\ \text{1\% worse every day} & \quad 0.99^{365} = 0.03 \end{aligned}$$



1%

How can you make the difference?



- Maths – The use of Sparx for the recommended one hour of homework per week was associated with an increase of **almost 20% of a (predicted) GCSE grade**
- PE – all students who scored **60%+** on all their EverLearner assessments throughout Year 11 achieved a **grade 4+ in PE**
- PE – students who complete their EverLearner homework every week achieve **10%** more in their **final grade**, compared to those who don't
- Geography – students who achieved a **grade 9** in geography, were those students who regularly handed in **additional past papers** to receive **feedback** from staff





Home



Revision



Assessments



Reports



Management

AQA Foundation – 11/Ma1

Enter marks +

Overview

Results

Fix-up

Fluency

Problem solving

Fix up fluency

Paper 1 ▾

off ☒ on ⓘ

View answer history →

	Topic	Topic name	Topic name	Topic name	Topic name	Topic name	Topic name	Topic name	Topic name	Topic name	Topic name	Topic name	Topic name	Topic name	Topic name
	Number of students assigned this question	4	8	8	11	0	0	0	3	2	1	2	9	23	28
	Average progress	0%	0%	5%	5%	0%	0%	0%	5%	5%	10%	10%	10%	0%	0%
Student name	Paper mark	Progress	Q 1	Q 2	Q 3	Q 4	Q 5	Q 6	Q 7	Q 8	Q 9	Q 10	Q 11	Q 12	Q 13
Isabella Brown	36/80	6/9 (90%)		0	3	4				4	4	3	3	3	0
Chloe Davies	36/80	0/12 (0%)	0	0	0	0	0			0	0	0	0	0	0
Jacob Jones	36/80	0/5 (0%)											0	0	0
Liam Patel	36/80	0/13 (0%)	0	0	0	0	0	0	0	0	0	0	0	0	0
Olivia Smith	36/80	11/11 (100%)		3	3	3	3	3	3	3	3	3			3

Key:

Number of answers

Last answer correctLast answer incorrectNot answeredNot assigned

Meridian
Trust

The Pursuit of Excellence



Valuing People



Achievement For All



High-Quality Learning Environment

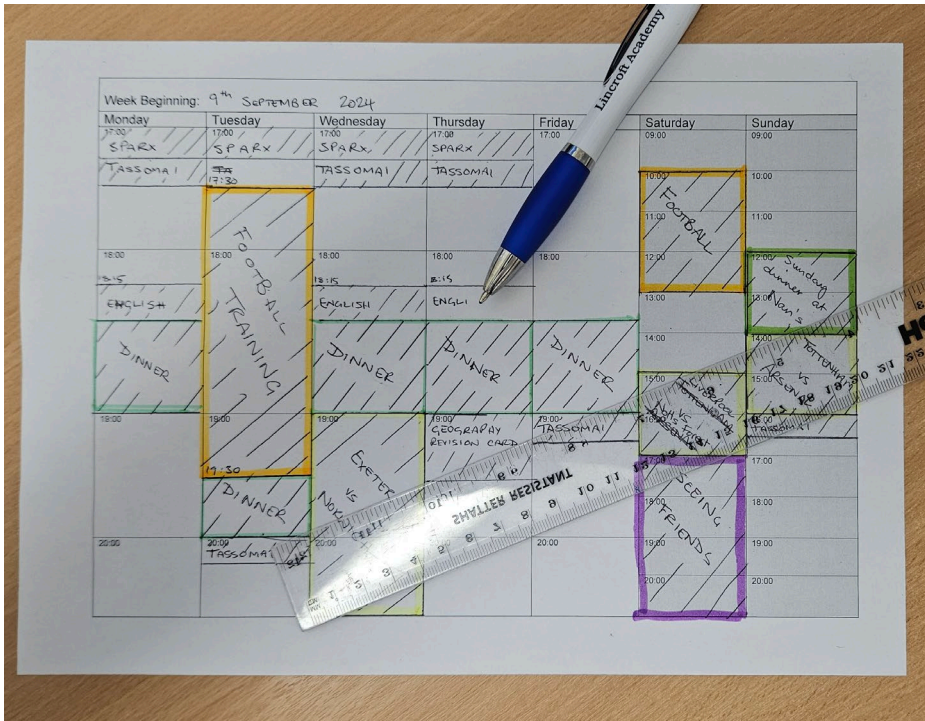


Extends the Boundaries of Learning

Creating a Study Schedule



Creating a study schedule is essential for effective revision. It helps us stay organized, manage our time efficiently, and reduce stress. A study schedule should include breaks, specific subjects/topics to revise, and realistic goals.



Start by adding your non negotiables – football training, Dance lesson etc.

Make sure you add in regular homework you know you will be set such as Sparx Maths, Geography Revision Cards, etc.

Split the hour into 15-minute sections to allow you to change focus and take breaks.

Later in the process you can add sessions and be specific about what you need to revise based on your strengths and areas for improvement.

How will we share the progress your child is making?



Academic Mentoring

- Year 11 Students will meet individually with their tutor 3 times this year, once after each progress report.
- Tutors will:
 - Review results from previous assessments.
 - Identify key areas for targeted improvement.
 - Support the students in creating SMART targets for the areas identified.
- You will receive a copy of these targets via email.

- Credits and postcards
- Phone-calls and emails home
- Mock Results Day
- Progress Reports (Sept, Jan and April):
 - Effort
 - Attitudes to learning
 - Target Grades
 - End of Course Predicted Grades
 - Behaviour and Achievement points
 - Attendance
- Parents evenings



Wellbeing during revision



Wellbeing is important during the revision period as it helps us stay focused, reduce stress, and improve our productivity.

Maintaining a healthy lifestyle

Sleep

Taking breaks

Managing stress

Effective revision techniques

Creating a study schedule



Key Dates



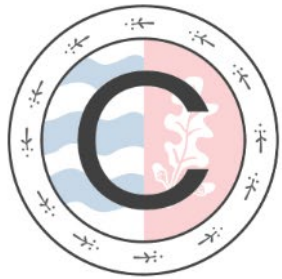
Summer exams run from 7th May 2026 until the 26th June 2026
(this includes exam contingency days)

‘Exam Leave’ dates will be decided based on cohort progress and will be
made closer to the time

Year 11 Prom – 2nd July 2026 (Provisional Date)



At Lincroft Academy, we



Community



Aspiration



Respect



Excellence



Designated Staff



Jodie Attreed
Designated
Safeguarding Lead
Vice Principal



Monika Byrne
Deputy Designated
Safeguarding Lead



Emma Appadoo
Principal



Hannah Stoodley
Deputy Designated
Safeguarding Lead
Assistant Principal



Leanne Drake
Assistant Principal



Chris Drake
Assistant Principal



Paul Davis
Assistant Principal



Evelyn Hood
Assistant Principal



Robbie Alder
Senior Tutor



Kate Webb
Senior Tutor



Amber Oswick
Senior Tutor



Kate Anning
Senior Tutor



Sally Davies
Student Support
Assistant



Kerry Chalmers
Student Support
Assistant



Deborah Lloyd
Student Support
Assistant



Joanne Stears
Student Support
Assistant