

Welcome to Lincroft Academy



The poster features a blue background with white wavy lines and a stylized plant. On the right, there are three circular images: the top one shows a group of children in school uniforms with their hands raised; the middle one shows the exterior of Lincroft Academy; the bottom one shows a group of children in school uniforms walking. The Meridian Trust logo is in the top right corner. At the bottom, there is a row of five icons with labels: Community, Aspiration, Respect, Excellence, and a fifth icon with a label that is partially obscured.

LINCROFT ACADEMY

Year 6 Open Evening
Thursday 9 October 2025

CARE, at every step of your journey

Open Evening Bookings

Meridian Trust

Community Aspiration Respect Excellence

At Lincroft Academy, we



Community



Aspiration



Respect



Excellence

Be the best you can be at **Lincroft Academy**

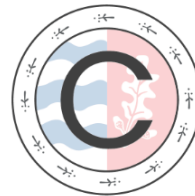
We Are Lincroft

Our Vision

An **exceptional** school of which the community can be very proud.....

.....so that our students become exceptional learners, confident and empowered to make a rewarding contribution to society.

Our Values



Community



Aspiration



Respect



Excellence

Our Mission

Be The Best You Can Be



We contribute to a shared sense of belonging where everyone can thrive and feel known, valued and supported.

'Pupils enjoy coming to school and seeing their friends. They benefit from the school's welcoming community, where they are well cared for.'

Ofsted, 2024

About Meridian Trust...

Meridian Trust has over a decade of highly successful experience **delivering great schools** and **serving communities** across our region.

As of September 2025, there are **32 schools** within Meridian Trust

- 16 primary
- 13 secondary
- 1 all-through
- 3 special educational needs

We are also the approved sponsor for three free schools currently in development and are in the consultation phase with a further four schools seeking to join us soon.

In addition to operating schools, we are the home of the **Cambridgeshire and Peterborough Teaching School Hub (CPTSH)**, and train more than 150 new teachers each year through **Meridian Trust ITT** (The Cambridge Partnership).

As a **strong, regional multi-academy trust** we currently operate schools across Bedfordshire, Cambridgeshire, Peterborough, Lincolnshire and Northamptonshire. We are proud to have strong **partnerships within all these communities**.



Hear from our Students

'I would tell them that they have joined a good school and there are care values so they should make sure to be kind, and they also should try their best at learning, they can ask a teacher where to go if they're lost.'

'It seems really scary but I promise its not once you get more comfortable with your surroundings. I promise you will learn your way around by the first week.'



'Do not worry there will be lots of people to help you around school.'

'Try your hardest in your lessons, enjoy yourself and don't be afraid to ask for help.'

'Don't be worried about starting Lincroft Academy. Everyone will help you settle in like you were always a part of the community of Lincroft. Everyone makes mistakes but in Lincroft Academy you get second chances'



LINCROFT
ACADEMY



Meridian
Trust



The Pursuit of Excellence



Valuing People



Achievement For All



High-Quality Learning Environment



Extends the Boundaries of Learning

Known, valued and supported



- **Houses** – *Four schools in one* – each lead by a senior member of staff
- **Assistant Principal** leads each House
- **Senior Tutor** – Monitors academic progress and ensures the quality of tutoring
- **Student Support Assistants (SSA)** – *First point of contact* – dedicated phone-line
- **Tutoring Family** – Sibling in same house; mixed-age 'vertical' tutoring

Academic Mentoring – academic achievement, parallel curriculum and futures guidance and support; personal contact with families as part of academic mentoring process

Smaller tutor groups – 25 students per tutor




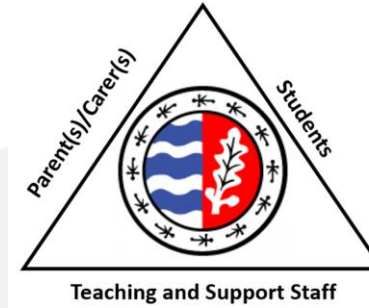
We



Head of House
Miss Stoodley

Senior Tutor
Mrs Buckley-Theed


Student Support Assistant
Miss Stears



Head of House
Mr Drake

Senior Tutor
Mrs Webb


Student Support Assistant
Mrs Chalmers



Head of House
Mrs Hood

Senior Tutor
Mr Alder

Student Support Assistant
Miss Reed



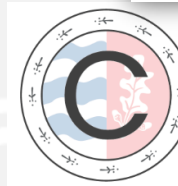
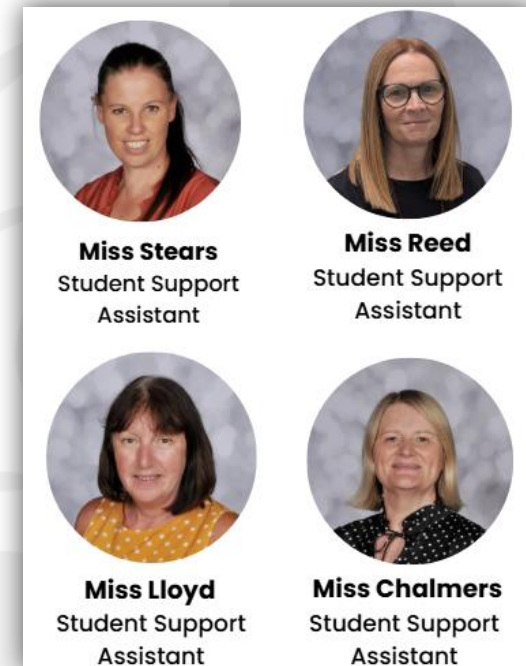
Head of House
Mr Davis

Senior Tutor
Miss Magill

Student Support Assistant
Miss Lloyd

Role of the Student Support Assistant (SSA)

- To support students & parents/carers
 - Someone to talk to, available throughout the day
 - Information and advice
 - To guide, nurture and support students
 - Direct email and phone line to each House Office.
-
- House Office open through the day in case of:
 - Illness
 - Contact with home/ problems/ questions
 - The need to respond quickly if an issue emerges



Community



Aspiration

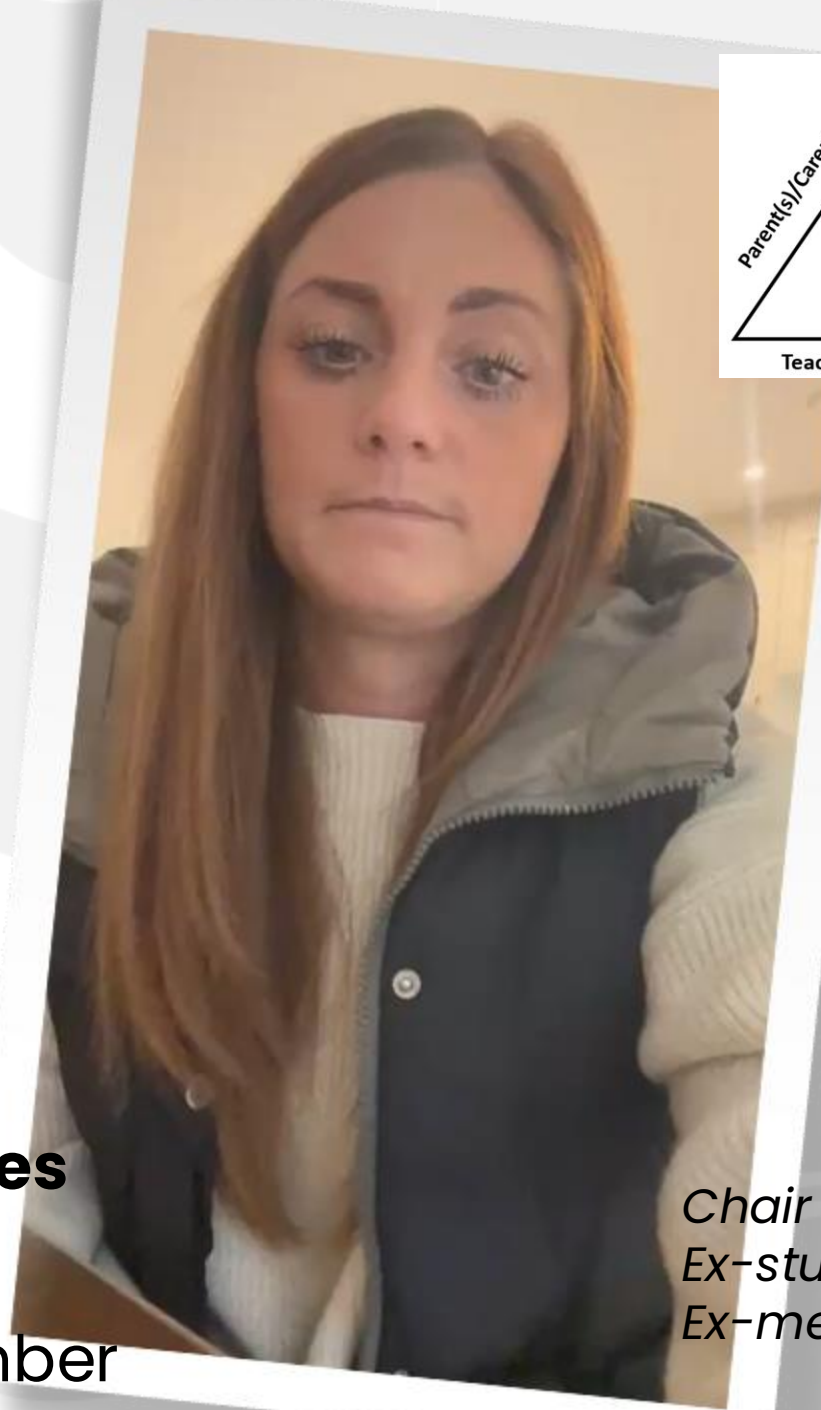


Respect



Excellence





Gemma Hubbard-Jones
Parent of Y8 student
Academy Council Member

*Chair of Governors at local primary school
Ex-student
Ex-member of staff*



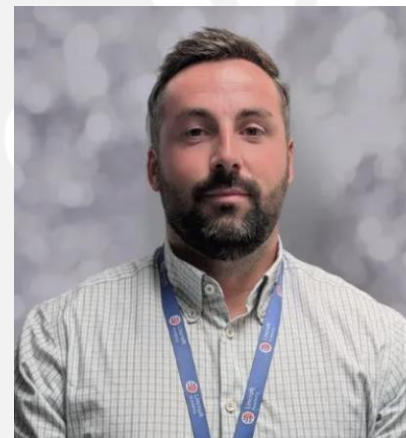
Meeting the Needs of Every Child

The right support for the right student at the right time

- Tutor
- House Team
- Subject Team
- SEND & Inclusion Team (Inclusion Support Assistants, Counsellor, TAs, ELSA)
- Lottie



Mr Thom Johnson, Assistant
Principal (Inclusion
& SENDCO)








Mr Ben Barry, Assistant
Principal (Lead Practitioner
SEND & Deputy SENDCO)



INCLUSION: THE 5 PILLARS

'The school carefully identifies pupils' individual needs. Adults provide effective support to help pupils access the curriculum, including those with special educational needs and/or disabilities (SEND).'
Ofsted, 2024.

	House Office (Pastoral support) 	Pivot (Triage) 	Restoration (Behaviour intervention) 	The Compass (SEMH / coms intervention) 	The Bridge (Academic intervention) 
TYPE OF SUPPORT	<ul style="list-style-type: none"> - Administrative support - Reports / PSP's - Early Help - Coaching conversations - Self and co-regulation 	<ul style="list-style-type: none"> - Short term regulation - Debrief after an event - Withdrawal from lesson or social times 	<ul style="list-style-type: none"> - Classroom ready intervention - Re-establish behavioural routines and expectations - Reflection and next steps 	<ul style="list-style-type: none"> - SEMH and communication interventions - CREW at form time - Regulation base and work-stations for targeted students 	<ul style="list-style-type: none"> - Cognition and learning based interventions - Targeted reading, literacy, arithmetic, maths and academic interventions.
WHO CAN ACCESS	<ul style="list-style-type: none"> - All students in the House - Those on Senior Tutor or Head of House report. - Those who have exhausted tutor support. - Those that need to co-regulate. - Trusted adults in school 	<ul style="list-style-type: none"> - Universal access with a member of staff - Those with a House pass when House is not available - Those withdrawn from a lesson or social times - Those who may have an injury / restricted movement 	<ul style="list-style-type: none"> - Universal support in response to detrimental or dangerous behaviours - Those who have been referred from a subject / social times - Part of a stepped response or after a serious one-off event 	<ul style="list-style-type: none"> - Targeted students only - Those with a timetabled intervention - Those who can access it as part of their APDR - Those who need access to a designated workstation 	<ul style="list-style-type: none"> - Targeted students only - Those with a timetabled intervention - Those who need academic support as part of a personalised support curriculum
WHEN TO ACCESS	<ul style="list-style-type: none"> - Social times for support in contacting home etc. - Need to self or co-regulate (House Pass) - Part of agreed plan 	<ul style="list-style-type: none"> - The impact of a student's current behaviour is detrimental to others - House not available (House Pass) 	<ul style="list-style-type: none"> - Continued detrimental or dangerous behaviour - After a serious one-off event - As part of a reintegration package 	<ul style="list-style-type: none"> - Timetabled SEMH or communication and interaction intervention - Workstations for specific mainstream students 	<ul style="list-style-type: none"> - Timetabled academic interventions as part of a personalised curriculum - Timetabled delivery of the support curriculum
HOW TO ACCESS	<ul style="list-style-type: none"> - Independently during social times - House Pass during lessons 	<ul style="list-style-type: none"> - Withdrawn from lesson or social times - Other immediate reasons 	<ul style="list-style-type: none"> - Referred after daily behaviour meeting or re-integration meeting - Placed there from the Pivot 	<ul style="list-style-type: none"> - Part of ADPR or EHCP - Part of personalised curriculum - Compass Pass 	<ul style="list-style-type: none"> - Part of APDR or EHCP - Part of personalised curriculum

Our 5 Pillars



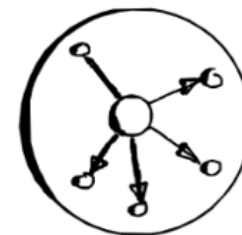
House Office (Pastoral support)



- Administrative support
- Reports / PSP's
- Early Help
- Coaching conversations
- Self and co-regulation



Pivot (Triage)



- Short term regulation
- Debrief after an event
- Withdrawal from lesson or social times

Our 5 Pillars



The Compass (SEMH / coms intervention)



- SEMH and communication interventions
- CREW at form time
- Regulation base and work-stations for targeted students

Restoration (Behaviour intervention)



- Classroom ready intervention
- Re-establish behavioural routines and expectations
- Reflection and next steps



The Bridge (Academic intervention)



- Cognition and learning based interventions
- Targeted reading, literacy, arithmetic, maths and academic interventions.

ARC



'Pupils in the ARC, the school's on-site specially resourced provision for pupils with SEND, benefit from the same high-quality support. They thrive under the care and expertise of staff, achieving well and developing independence. This reflects the school's CARE values and ambition for all learners.'

Ofsted, 2024.

Some essentials





Aspiration

We aim high and work hard for personal and academic growth.

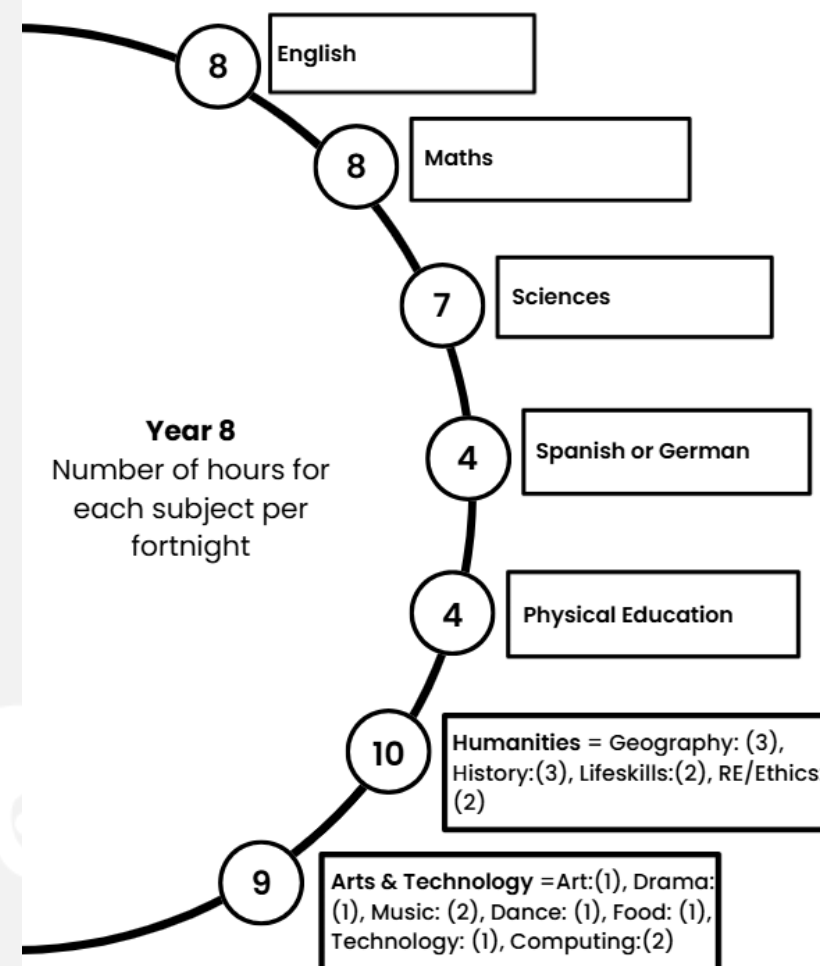
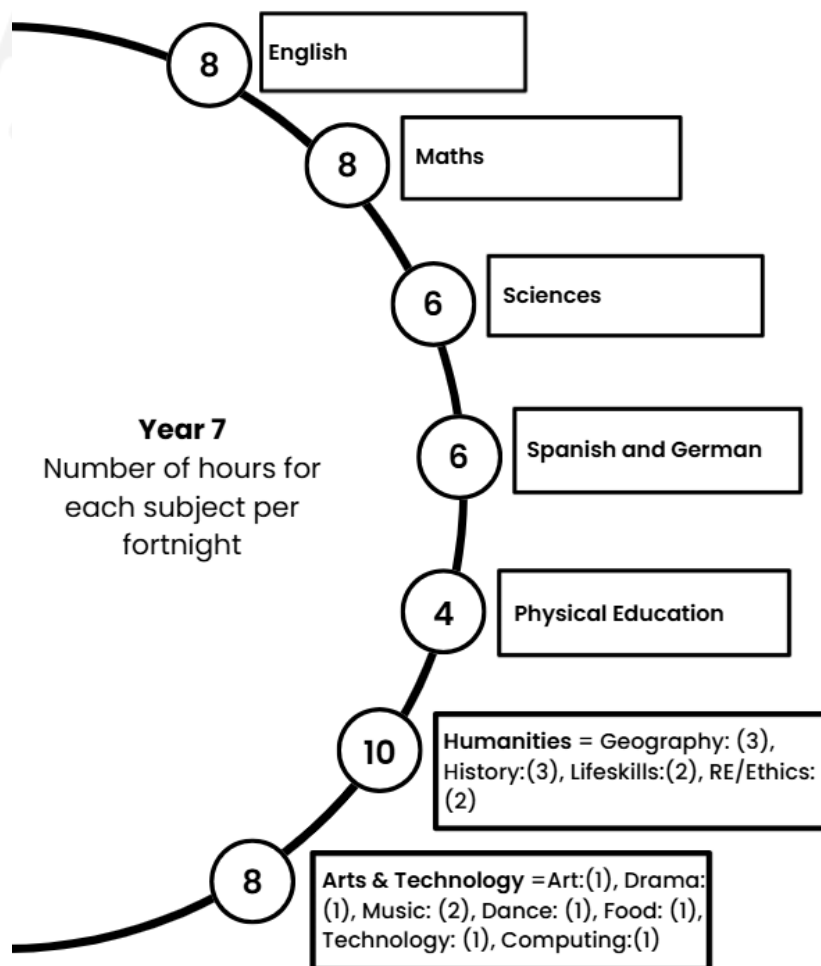
'The school is aspirational for its pupils' academic achievement.'

'The school's ambitious curriculum offers a broad range of subjects enriched by meaningful trips and visits.'

Ofsted, 2024



Our Curriculum



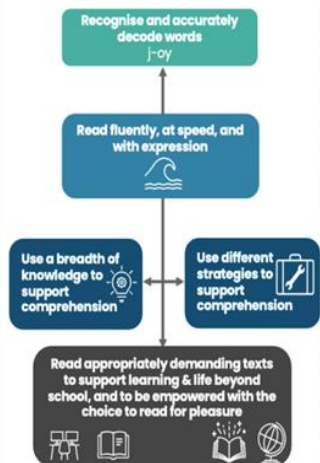
CARE to Teach



Our Reading Charter

We aim for every young person to leave school as a skilled reader

This means our students learn to...

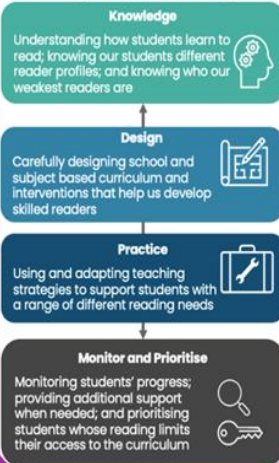


We believe that...

It takes a
WHOLE
School
to develop a
reader

Meridian Trust

Our schools achieve this by strategically prioritising...



LINCROFT
ACADEMY

COMMUNITY

We use the experience of reading to bring us together.

ASPIRATION

We place reading at the heart of our curriculum to support our students in achieving their goals and aspirations.

RESPECT

We enable our students to read a diverse range of texts to promote respect for others.

EXCELLENCE

We recognise that excellent readers are often more prepared to tackle complex subjects, articulate their ideas clearly, and perform well in assessments.



WE CARE ABOUT READING



We employ evidence-based strategies such as modelled reading, explicit vocabulary instruction, and dual coding to support our students with their reading every day.



We deliver the Powerful Words 5-year programme to our tutees weekly, teaching them a range of Tier 2 words from Coxhead's 'Academic Word List'.

We follow the Meridian Trust Reading Charter in our aim for every young person to leave our school as a skilled reader.



We provide high-quality literacy interventions and whole-school practices for our students who struggle with their reading.



We welcome all students every day to our school library, a communal space to share the experience of reading together.

Learning Outside The Classroom



 LINCROFT
ACADEMY

 Council for
Learning Outside
the Classroom

 Meridian
Trust

We achieved the **Silver Mark in
Learning Outside the Classroom**

#ExtendingTheBoundariesOfLearning #LoTC

PLEDGES

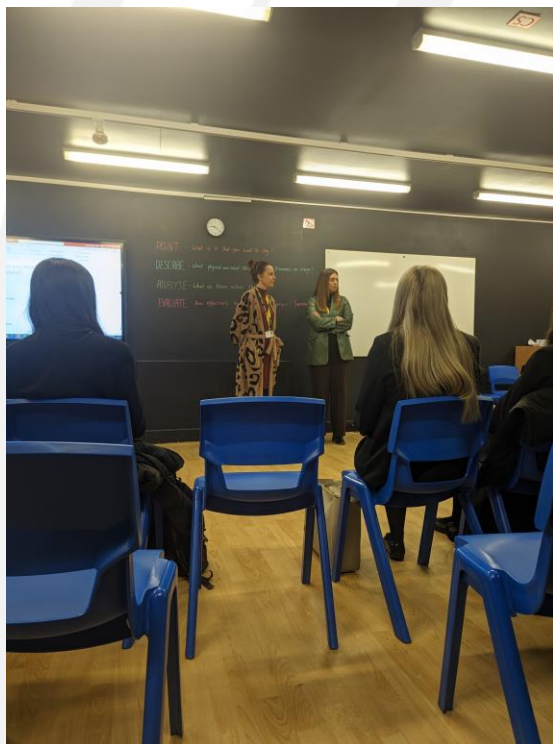


Gold: TO LEAD		Silver: HELP ORGANISE		Bronze: TAKE PART IN		
PARTICIPATION	LEADERSHIP	EXCELLENCE	DIVERSITY	GIVING	ENVIRONMENT	SERVICE

Destinations 2025



LINCROFT
ACADEMY



100%



The Pursuit of Excellence



Valuing People



Achievement For All



High-Quality Learning Environment



Extends the Boundaries of Learning



Respect

We value everyone's voice and always show kindness and care to each other, our school and ourselves.

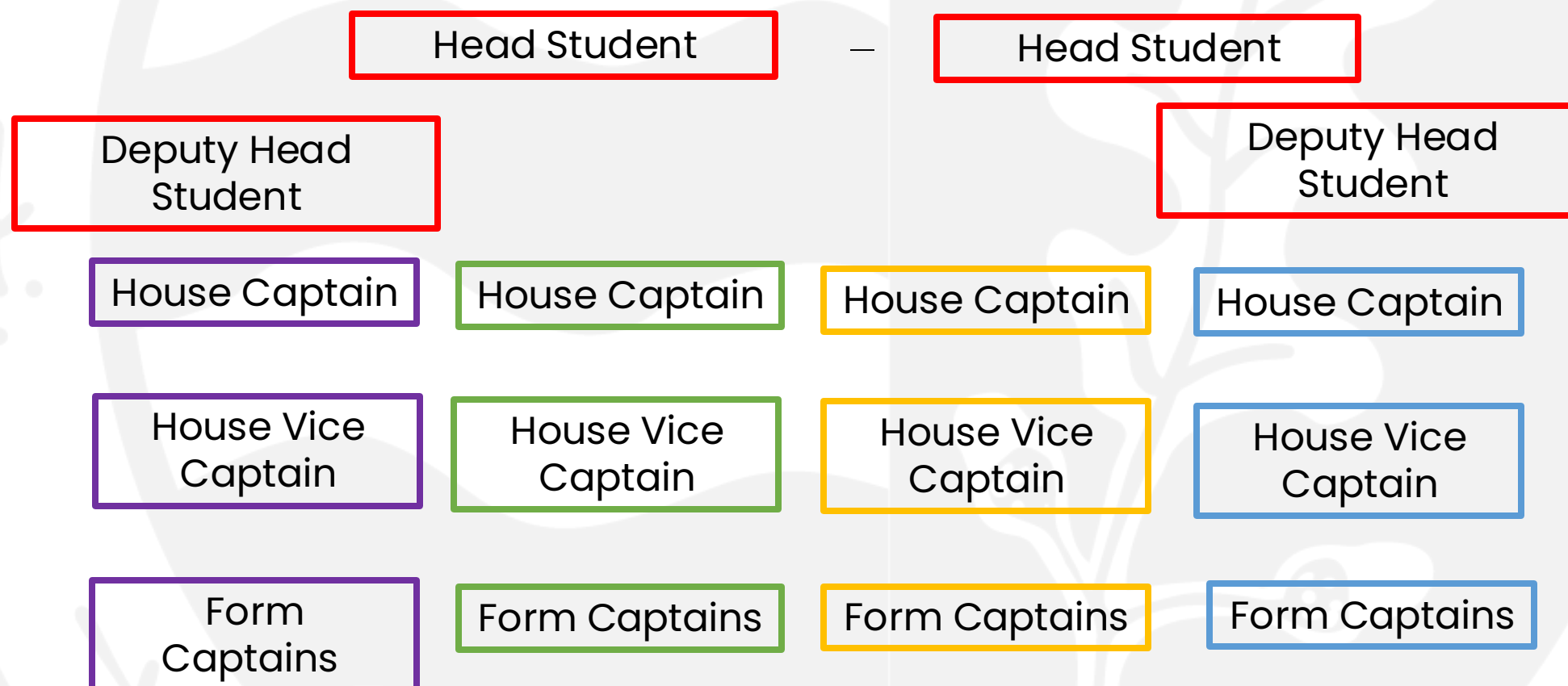
'Pupils appreciate the significant improvements in behaviour since the previous inspection. They learn in a calm environment, where disruptions to learning are rare.'

Ofsted, 2024.



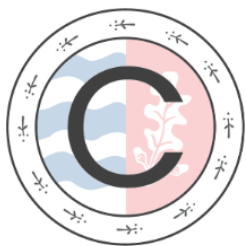
CARE to Lead:

CARE Council and CARE Ambassadors





Our High Standards & Expectations



Community



Aspiration



Respect



Excellence

'Pupils appreciate the significant improvements in behaviour since the previous inspection. They learn in a calm environment, where disruptions to learning are rare.'

Ofsted, 2024.



All of us, all the time



Meridian
Trust



The Pursuit of Excellence



Valuing People



Achievement For All



High-Quality Learning Environment



Extends the Boundaries of Learning

We have CALM corridors at



C



Continue Purposefully and quietly to your destination.

A



Always walk on the left.

L



Leave the corridors clean and tidy.

M



Mobile phones off and away.

When using the toilet at



LINCROFT ACADEMY

, use SOAP:

S



Single file queue.

O



One person per cubicle.

A



Always wash your hands.

P



Please exit, no waiting.



LINCROFT ACADEMY

LINCROFT ACADEMY ANTI-BULLYING CHARTER

CARE

WHAT TO DO

SPEAK OUT

- REPORT BULLYING BEHAVIOUR IF YOU SEE IT
- SILENCE SUPPORTS BULLYING
- LOOK OUT FOR ANTI - BULLYING AMBASSADORS IF YOU ARE WORRIED, THEY WILL TAKE YOU TO THE NEAREST ADULT.



TELL A TRUSTED ADULT
ASK FOR HELP
LOOK AFTER OTHERS
KNOW WHAT BULLYING IS

STAND UP



- TAKE RESPONSIBILITY
- STAMP OUT STEREOTYPES
- BE AN UPSTANDER
- KINDNESS ALWAYS WINS!

ALWAYS REACH OUT



- CHECK IN WITH PEOPLE
- LISTEN TO ONE ANOTHER
- BE THE FRIEND YOU'D WANT TO HAVE

BULLYING IS:

"Behaviour by an individual or group, repeated over time, that intentionally hurts another individual or group either physically or emotionally"

SEVERAL
TIMES
ON
PURPOSE

WHO TO TELL?

TRUSTED ADULTS
SCHOOL STAFF
FRIENDS
FAMILY
CHILDLINE 08001111
REPORT TO

WORRIED@LINCROFT.ACADEMY

BE THE BEST YOU CAN BE





xcellence

We take pride in always being the best we can be.

'Pupils benefit from teachers' high expectations.'

'Leaders have raised expectations and enhanced opportunities for pupils. As a result, pupils, including those who are disadvantaged, achieve highly, and perform well in national exams.'

Ofsted, 2024.



CARE CUP

Be The Best You Can Be



Annually

Awards

CARE Celebration Evening
CARE Cup winners

**Annual winners
PLEDGES

Proud Principal Moment

HoH Community

S Tutor Aspiration

S Tutor Excellence

CARE Credit raffle

Attendance raffle

Excellence in Behaviour raffle

CARE Credit Awards

Rewards

Certificate

Jump the Queue Pass

Rewards Breakfast

CARE Celebration award



Termly

Awards

**Termly winners
PLEDGES

Proud Principal Moment

HoH Community

S Tutor Aspiration

S Tutor Excellence

CARE Credit raffle

Attendance raffle
Excellence in Behaviour
raffle

CARE Credit Awards

Rewards

Certificate

Jump the Queue Pass

Rewards Breakfast

Tutor group breakfast



Half-Termly

Awards

**Half Termly winners
PLEDGES

CARE Cards

HoH Community

S Tutor Aspiration

S Tutor Excellence

CARE Credit raffle

Attendance raffle

Excellence in
Behaviour raffle
CARE Credit Awards

Rewards

Certificate

Jump the Queue Pass

Rewards Breakfast

Tutor group breakfast

Amazon Voucher



Weekly

Awards

CARE Cards

S Tutor Aspiration

S Tutor Excellence

Tutee of the Week

*CARE Credit winners

*Attendance winners

*Excellence in
Behaviour winners

Rewards

Certificate

Jump the Queue Pass

Amazon Voucher



Daily

CARE Credits

Attendance

Excellence in
Behaviour

Verbal and
written praise

Demonstrate our values in every lesson and throughout our school community.

Community, Aspiration, Respect, Excellence

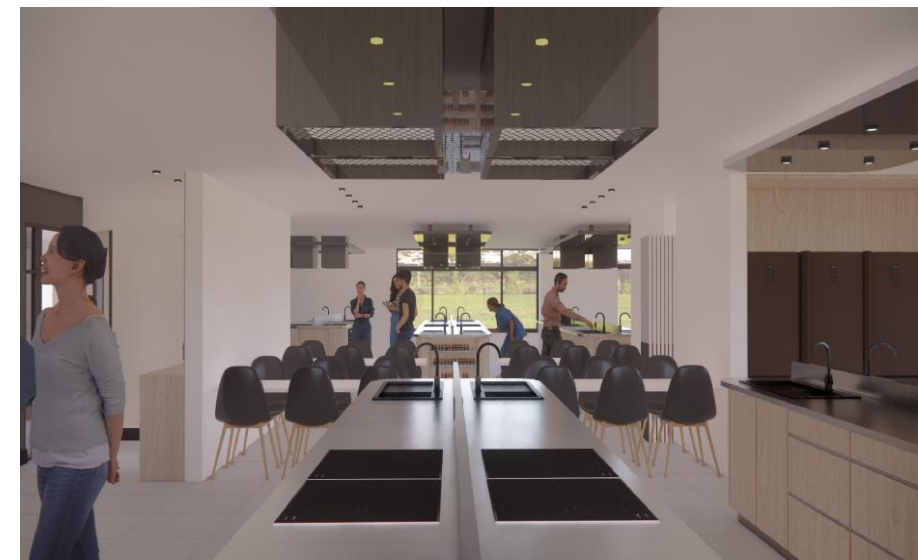
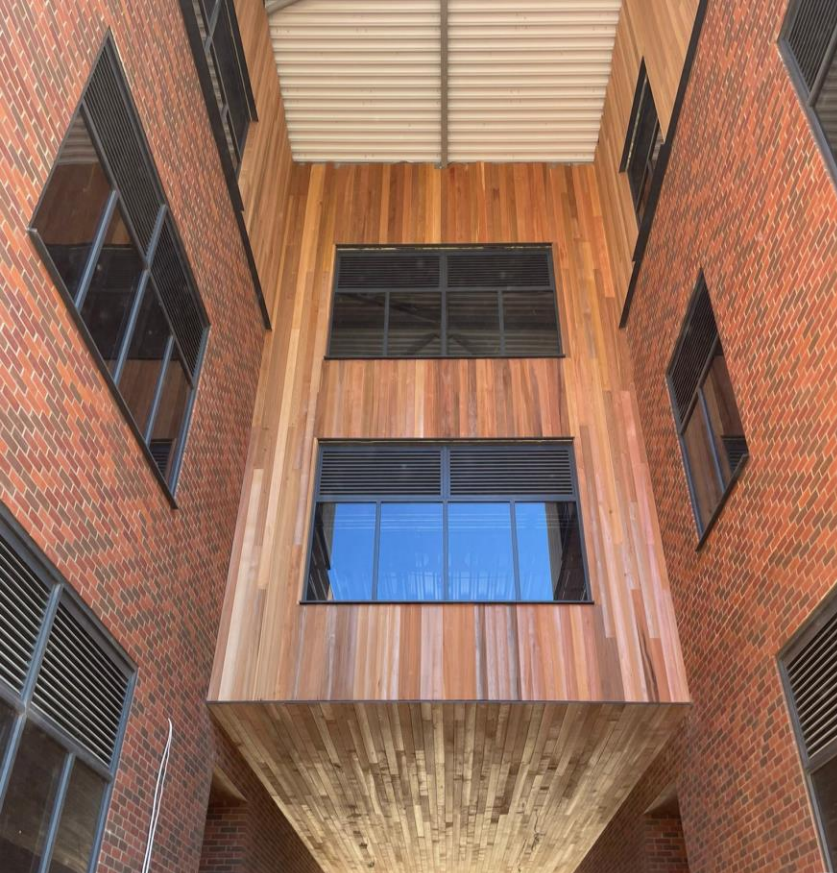
***CARE League *Points count towards the CARE League*

Site Development



LINCROFT
ACADEMY





The Class of 2025



The Pursuit of Excellence
 Valuing People
 Achievement For All
 High-Quality Learning Environment
 Extends the Boundaries of Learning

Students at Lincroft Academy celebrate excellent GCSE results

By Rosie Sly Contributor

Published 21st Aug 2025, 14:11 BST | Updated 21st Aug 2025, 14:16 BST



Lincroft Academy GCSE results - Matthew Price

Lincroft Academy was filled with pride this morning as Year 11 students collected a fantastic set of GCSE results.

Across a wide range of subjects, many surpassed their target grades - an achievement that reflects not only their talent, but months of dedication and determination.



[Students at Lincroft Academy celebrate excellent GCSE results](#)



The Class of 2024

- [Record-breaking GCSE results for students at Lincroft Academy \(bedfordtoday.co.uk\)](#)

Bedford Today

Education

Record-breaking GCSE results for students at Lincroft Academy

By Clare Burnell Contributor

[Comment](#)

Published 22nd Aug 2024, 14:38 BST



The Pursuit of Excellence
 Valuing People
 Achievement For All
 High-Quality Learning Environment
 Extends the Boundaries of Learning

The Class of 2023

Don't worry if you missed us on ITV news last night, here is a link to our students celebrating their fantastic results yesterday! [itv.com/news/anglia/20...](#) (2nd video down - ITV News Anglia West). Be quick! It's only available to watch until this evening! Thank you @itvanglia



The Pursuit of Excellence
 Valuing People
 Achievement For All
 High-Quality Learning Environment
 Extends the Boundaries of Learning





LINCROFT
ACADEMY

COMPLETE
CAREERS



Silver LOTC Mark

School report



Inspection of Lincroft Academy

Station Road, Oakley, Bedford, Bedfordshire MK43 7RE

Inspection dates:

3 and 4 December 2024

The quality of education

Good

Behaviour and attitudes

Good

Personal development

Good

Leadership and management

Good

Previous inspection grade

Requires improvement

'Under the guidance of newly appointed leaders and the trust, the school has made significant improvements since the previous inspection.'

Ofsted, 2024

Walk with the Principal

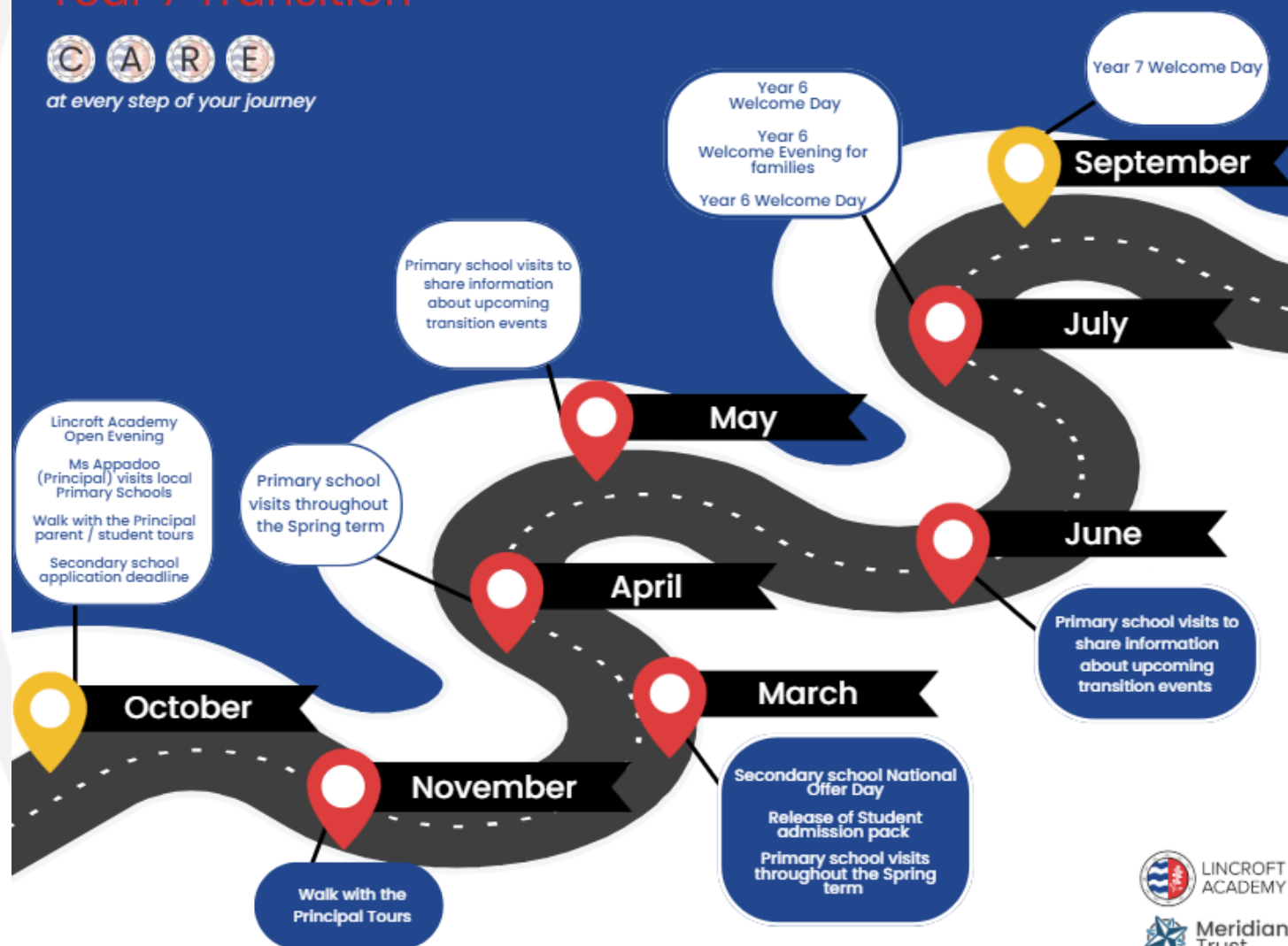


Welcome To Lincroft Academy

Year 7 Transition

C A R E

at every step of your journey



LINCROFT
ACADEMY



At Lincroft Academy, we



Community



Aspiration



Respect



Excellence

Be the best you can be at **Lincroft Academy**