



LINCROFT
ACADEMY



Meridian
Trust

Be the best you can be at **Lincroft Academy**

Our Year 6 Experience

For Year 7 Admissions



I am very proud to be the Principal at Lincroft Academy.

At Lincroft Academy, we **CARE**. Our values of **C**ommunity, **A**spiration, **R**espect and **E**xcellence are the foundation of who we are. Our foremost priority is to create a safe and nurturing environment where our students are known, valued and supported.

Within our vibrant learning community, we share a common goal; to be the best we can be. As a school, we commit to educating, inspiring, and supporting our students so that they can become exceptional learners, confident and empowered to make a rewarding contribution to society. Lincroft Academy now has some of the highest performing GCSE outcomes in Bedford which are above the national average. The opportunities provided at Lincroft are broad and our curriculum extends very much outside the classroom.

This brochure provides a useful summary for students joining us in Year 7, but we encourage you to visit us to experience life at Lincroft Academy. Welcome to our community.

EMMA APPADOO | PRINCIPAL



www.lincroft.academy

We are Lincroft Academy

At Lincroft Academy, we CARE.

Our CARE values are the foundation of who we are:



Community



Aspiration



Respect



Excellence

At Lincroft Academy, we care that every child is known, valued and supported to be the best they can be. We empower our students to become both successful learners and confident, respectful, employable citizens.

House System



Amethyst
House



Emerald
House



Sunstone
House



Topaz
House

Our House System places students at the centre, fostering belonging, positive relationships and close support. Offering students the right support at the right time.

Our House System underpins everything we do, enabling students to work with the same Tutor, Senior Tutor and Student Support Assistant (SSA) throughout their journey at Lincroft Academy. The system enables students to be closely supported and individual progress to be monitored even more carefully. The House is the key focus of the partnership between the school and families, with siblings joining the same House. House offices, each with a dedicated SSA, are a great base for students and parents to find the support and advice they may need, through a consistent and direct point of contact.

Working alongside each other, being supportive and showing CARE is integral to who we are. Our partnership with parents and carers is highly valued and we know that this is an essential part of a positive educational experience for our students.

Vertical Tutoring

A tutor group with students from Years 7-11 is known as Vertical Tutoring. Vertical Tutoring is for 30 minutes each morning and has many benefits, fostering a family spirit where older students offer guidance and provide support to younger students. The system enables staff to support students more closely with only a small number of students from each year group.

PLEDGES

Our PLEDGES frame the breadth of opportunity at Lincroft Academy as an enactment of our belief that curriculum is much more than the range of subjects taught during the school day. We have an innovative approach to embedding and celebrating valuable wider learning experiences. A truly 'whole' education nurtures the qualities and aims of PLEDGES, which sets out our aim and expectation that all children benefit from excellent academic and personal development.

We aim to ensure that every child fulfils their potential and has the opportunity to achieve excellence. PLEDGES is an award system which offers students a range of character-building opportunities that enhance their learning and development. **There are Bronze, Silver, and Gold levels in the following areas:**



PARTICIPATION
PLEDGE



LEADERSHIP
PLEDGE



EXCELLENCE
PLEDGE



DIVERSITY
PLEDGE



GIVING
PLEDGE



ENVIRONMENTAL
PLEDGE

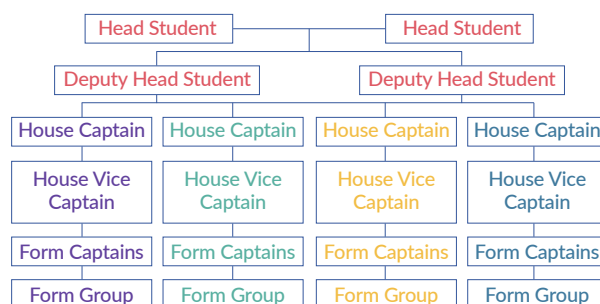


SERVICE
PLEDGE

Care to Lead : Student Voice

Through **Student Voice** students have the opportunity to share their ideas, shape their school experience, and play an active role in decision-making.

The heart of Student Voice at Lincroft Academy is our **CARE Council**.



Our Five Pillars of Inclusion

The right support, for the right student, at the right time.

Students are closely supported at Lincroft Academy. Our five pillars of inclusion ensure the right support, for the right student, at the right time. For all students, this starts with Tutors and the House Team. If students require a higher level of support they can be referred to distinct areas of Inclusion and SEND, led by expert staff at every level. This enables us to deliver a graduated response to make sure we meet the wide range of needs of our students, to ensure they have the best chance of fulfilling their potential. Lincroft Academy is a fully comprehensive, high-quality learning environment, with inclusion at the heart. We take great care in the pursuit of excellence, matching our curriculum to the needs and aspirations of every student in our community.



House Office
Pastoral Support



Pivot
Triage



Restoration
Behaviour Intervention



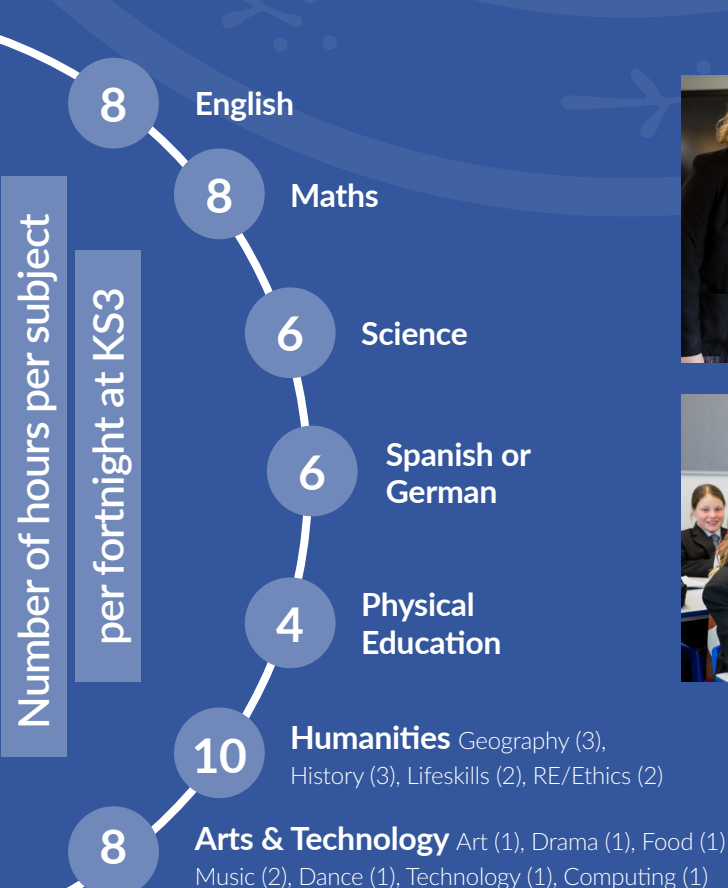
The Compass
SEMH / Communication
and Intervention



The Bridge
Academic Intervention

Curriculum overview

Bedford is one of the most diverse and fastest growing areas in the UK. Our curriculum reflects and benefits from that dynamism and diversity through its breadth, ambition and focus upon personal development and student experience. Our curriculum is designed to seamlessly build upon the foundation laid in primary school, preparing our students for post-16 education. Lincroft Academy has high performing GCSE outcomes, which enables our students to enter their chosen post-16 destinations when they leave us.



Scan the QR code to find out more or visit www.lincroft.academy



LINCROFT ACADEMY



Aspiration for the future

Our comprehensive five-year CEIAG pathway nurtures aspiration and prepares students for life in and beyond Lincroft Academy. Our students benefit from valuable careers education, information, advice and guidance at every step of their five-year journey with us, so that they can go on to secure places at preferred destinations after they leave us.



Extending the boundaries of learning



We invest both curriculum and pastoral time into Life skills (PSHE) and personal development and extend the boundaries beyond the classroom through trips, visits, events and other opportunities. Our silver Learning Outside the Classroom award, recognises our commitment to providing a wealth of valuable opportunities for our students outside of lessons.

Enrichment opportunities extend the boundaries of learning beyond the classroom.

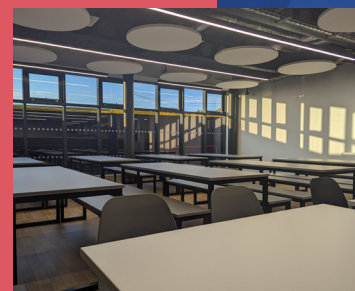
At Lincroft Academy, these include Meridian Trust Masterclasses and trips, the Duke of Edinburgh Award, Performing Arts Productions, instrumental lessons, PE clubs and fixtures competing up to national level, annual netball and ski residential trips, GCSE Revision & Subject Support groups and a range of extra-curricular clubs.



High-quality learning environment

In May 2024 we opened a brand-new building for our community, which includes a purpose-built Dining Room and kitchen. There is also a Performing Arts Studio on the top floor, offering an additional specialised space for drama, dance, music and PE activities.

We are very excited to bring more fantastic facilities for our students and wider community next year. Our building work commenced in September 2024 and sees the replacement of temporary classrooms with a brand-new purpose-built teaching block incorporating specialist facilities for music, technology, IT and art. There will also be improvements to parking capacity and access. The forecast completion date is Spring 2026.



Scan the QR code to
find out more about
our site expansion